

## Integrin alpha 1 Antibody (R30223)

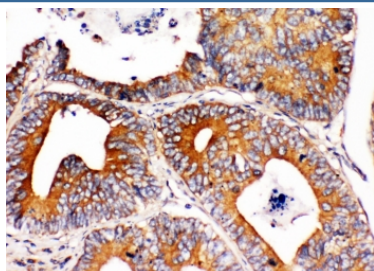
Catalog No.	Formulation	Size
R30223	0.5mg/ml if reconstituted with 0.2ml sterile DI water	100 ug

**Bulk quote request**

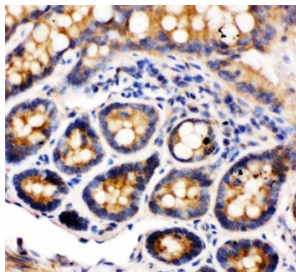
<b>Availability</b>	1-3 business days
<b>Species Reactivity</b>	Human, Mouse, Rat
<b>Format</b>	Antigen affinity purified
<b>Clonality</b>	Polyclonal (rabbit origin)
<b>Isotype</b>	Rabbit IgG
<b>Purity</b>	Antigen affinity
<b>Buffer</b>	Lyophilized from 1X PBS with 2% Trehalose
<b>UniProt</b>	P56199
<b>Applications</b>	Western Blot : 0.5-1ug/ml Immunohistochemistry (FFPE) : 0.5-1ug/ml
<b>Limitations</b>	This Integrin alpha 1 antibody is available for research use only.



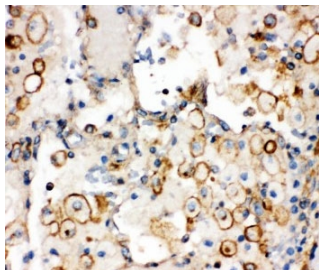
Western blot testing of Integrin alpha 1 antibody and Lane 1: rat brain; 2: HeLa; 3: SW620; Predicted molecular weight: ~131/150+ kDa (unmodified/glycosylated).



IHC-P: Integrin alpha 1 antibody testing of human intestinal cancer tissue. HIER: steamed with pH6 citrate buffer.



IHC-P: Integrin alpha 1 antibody testing of rat intestine tissue. HIER: steamed with pH6 citrate buffer.



IHC-P: Integrin alpha 1 antibody testing of human lung cancer tissue. HIER: steamed with pH6 citrate buffer.

## Description

Integrin alpha 1 (ITGA1) chain associates with the beta 1 (ITGB1) chain to form a heterodimer that functions as a dual laminin/collagen receptor in neural cells and hematopoietic cells. ITGA1 has a 206-amino acid I domain in its N-terminal half, followed by 3 divalent cation-binding sites and a C-terminal transmembrane domain with a short cytoplasmic tail. It also has 28 potential N-glycosylation sites. Human ITGA1 was expressed in a mouse fibroblast cell line as a 180-kD protein. ITGA1 is involved in the early remodeling of osteoarthritic cartilage and plays an essential role in the regulation of mesenchymal stem cell proliferation and cartilage production. It also plays an essential role in the regulation of MSC proliferation and cartilage production.

## Application Notes

The stated application concentrations are suggested starting amounts. Titration of the Integrin alpha 1 antibody may be required due to differences in protocols and secondary/substrate sensitivity.

## Immunogen

An amino acid sequence from the C-terminus of human Integrin alpha 1 (SNQKRELAIQISKD) was used as the immunogen for this Integrin alpha 1 antibody.

## Storage

After reconstitution, the Integrin alpha 1 antibody can be stored for up to one month at 4°C. For long-term, aliquot and store at -20°C. Avoid repeated freezing and thawing.