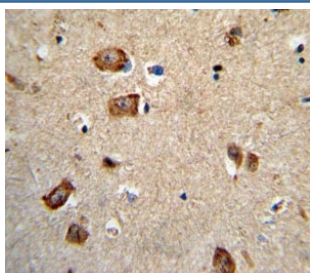


## Integrin alpha 1 Antibody (F51365)

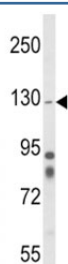
Catalog No.	Formulation	Size
F51365-0.4ML	In 1X PBS, pH 7.4, with 0.09% sodium azide	0.4 ml
F51365-0.08ML	In 1X PBS, pH 7.4, with 0.09% sodium azide	0.08 ml

**Bulk quote request**

<b>Availability</b>	1-3 business days
<b>Species Reactivity</b>	Human, Mouse
<b>Format</b>	Antigen affinity purified
<b>Clonality</b>	Polyclonal (rabbit origin)
<b>Isotype</b>	Rabbit Ig
<b>Purity</b>	Antigen affinity
<b>UniProt</b>	P56199
<b>Applications</b>	Western Blot : 1:1000 IHC (Paraffin) : 1:10-1:50
<b>Limitations</b>	This Integrin alpha 1 antibody is available for research use only.



IHC analysis of FFPE human brain tissue stained with Integrin alpha 1 antibody



Western blot analysis of Integrin alpha 1 antibody and mouse cerebellum tissue lysate.  
Predicted molecular weight: ~131/150+ kDa (unmodified/glycosylated).

## Description

ITGA1 is the alpha 1 subunit of integrin receptors. This protein heterodimerizes with the beta 1 subunit to form a cell-surface receptor for collagen and laminin. The heterodimeric receptor is involved in cell-cell adhesion and may play a role in inflammation and fibrosis. The alpha 1 subunit contains an inserted (I) von Willebrand factor type I domain which is thought to be involved in collagen binding.

## Application Notes

Titration of the Integrin alpha 1 antibody may be required due to differences in protocols and secondary/substrate sensitivity.

## Immunogen

A portion of amino acids 727-755 from the human protein was used as the immunogen for this Integrin alpha 1 antibody.

## Storage

Aliquot the Integrin alpha 1 antibody and store frozen at -20oC or colder. Avoid repeated freeze-thaw cycles.