

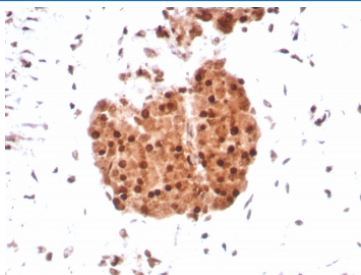
## Integrase interactor 1 Antibody / SMARCB1 / BAF47 [clone SMARCB1/8851R] (V4862)

| Catalog No.    | Formulation   | Size   |
|----------------|---|--------|
| V4862-100UG    | 0.2 mg/ml in 1X PBS with 0.1 mg/ml BSA (US sourced), 0.05% sodium azide | 100 ug |
| V4862-20UG     | 0.2 mg/ml in 1X PBS with 0.1 mg/ml BSA (US sourced), 0.05% sodium azide | 20 ug  |
| V4862SAF-100UG | 1 mg/ml in 1X PBS; BSA free, sodium azide free                          | 100 ug |

Recombinant **RABBIT MONOCLONAL**

[Bulk quote request](#)

|                    |  |
|--------------------|--|
| Availability       | 1-3 business days  |
| Species Reactivity | Human  |
| Format             | Purified   |
| Clonality          | Recombinant Rabbit Monoclonal  |
| Isotype            | Rabbit IgG, kappa  |
| Clone Name         | SMARCB1/8851R  |
| Purity             | Protein A/G affinity   |
| UniProt            | Q12824   |
| Localization       | Nucleus  |
| Applications       | Immunohistochemistry (FFPE) : 1-2ug/ml for 30 min at RT                  |
| Limitations        | This Integrase interactor 1 antibody is available for research use only. |



IHC staining of FFPE human sarcoma tissue with INI-1 antibody (clone SMARCB1/8851R) HIER: boil tissue sections in pH 9 10mM Tris with 1mM EDTA for 20 min and allow to cool before testing.

### Description

The INI-1 gene, which encodes a functionally uncharacterized protein component of the hSWI/SNF chromatin remodeling complex, is often mutated or deleted in malignant rhabdoid tumor (MRT). Two isoforms of INI-1, that differ by the variable inclusion of amino acids, potentially are produced by differential RNA splicing. The morphology of MRTs can present

challenges in differential diagnosis. The overall survival of MRTs relative to its potential mimics (medulloblastoma, supratentorial primitive neuroectodermal tumors (sPNETs) is quite low, and thus differentiation from these other tumors is desirable. Lack of nuclear labeling by anti-INI-1 is characteristic of MRT. The majority of medulloblastomas and sPNETs are labeled by anti-INI-1. MRTs also originate from the kidney and soft tissues.

## Application Notes

Optimal dilution of the Integrase interactor 1 antibody should be determined by the researcher.

## Immunogen

A recombinant partial protein sequence (within amino acids 1-200) from the human protein was used as the immunogen for the Integrase interactor 1 antibody.

## Storage

Aliquot the Integrase interactor 1 antibody and store frozen at -20oC or colder. Avoid repeated freeze-thaw cycles.