

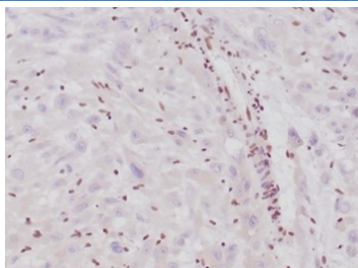
Integrase interactor 1 Antibody / INI1 / SMARCB1 / BAF47 [clone SMARCB1/4587R] (V9475)

Catalog No.	Formulation	Size
V9475-100UG	0.2 mg/ml in 1X PBS with 0.1 mg/ml BSA (US sourced), 0.05% sodium azide	100 ug
V9475-20UG	0.2 mg/ml in 1X PBS with 0.1 mg/ml BSA (US sourced), 0.05% sodium azide	20 ug
V9475SAF-100UG	1 mg/ml in 1X PBS; BSA free, sodium azide free	100 ug

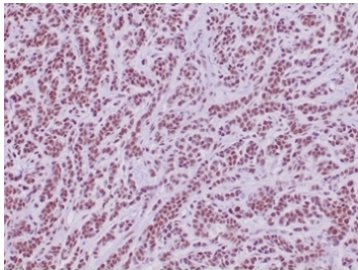
Recombinant **RABBIT MONOCLONAL**

[Bulk quote request](#)

Availability	1-3 business days
Species Reactivity	Human, Mouse
Format	Purified
Host	Rabbit
Clonality	Recombinant Rabbit Monoclonal
Isotype	Rabbit IgG
Clone Name	SMARCB1/4587R
Purity	Protein A/G affinity
UniProt	Q12824
Localization	Nuclear
Applications	Immunohistochemistry (FFPE) : 1-2ug/ml
Limitations	This Integrase interactor 1 antibody is available for research use only.



IHC staining of FFPE human epithelioid sarcoma with Integrase interactor 1 antibody (clone SMARCB1/4587R). HIER: boil tissue sections in pH 9 10mM Tris with 1mM EDTA for 20 min and allow to cool before testing.



IHC staining of FFPE human sarcoma tissue with Integrase interactor 1 antibody (clone SMARCB1/4587R) HIER: boil tissue sections in pH 9 10mM Tris with 1mM EDTA for 20 min and allow to cool before testing.

Description

Core component of the BAF (hSWI/SNF) complex. This ATP-dependent chromatin-remodeling complex plays important roles in cell proliferation and differentiation, in cellular antiviral activities and inhibition of tumor formation. [UniProt]

Application Notes

Optimal dilution of the Integrase interactor 1 antibody should be determined by the researcher.

Immunogen

Human full-length INI1 protein was used as the immunogen for the Integrase interactor 1 antibody.

Storage

Aliquot the Integrase interactor 1 antibody and store frozen at -20oC or colder. Avoid repeated freeze-thaw cycles.