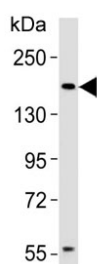


Insulin Receptor Related Antibody / INSRR (F52882)

| Catalog No. | Formulation | Size |
|---------------|--|---------|
| F52882-0.4ML | In 1X PBS, pH 7.4, with 0.09% sodium azide | 0.4 ml |
| F52882-0.08ML | In 1X PBS, pH 7.4, with 0.09% sodium azide | 0.08 ml |

Bulk quote request

| | |
|---------------------------|--|
| Availability | 1-3 business days |
| Species Reactivity | Human |
| Format | Antigen affinity purified |
| Clonality | Polyclonal (rabbit origin) |
| Isotype | Rabbit Ig |
| Purity | Antigen affinity |
| UniProt | P14616 |
| Applications | Western Blot : 1:1000-4000 |
| Limitations | This Insulin Receptor Related antibody is available for research use only. |



Western blot analysis of lysate MCF-7 cells using Insulin Receptor Related antibody at 1:1000. Expected molecular weight: ~80 kDa, 144 kDa.

Description

Receptor with tyrosine-protein kinase activity. Functions as a pH sensing receptor which is activated by increased extracellular pH. Activates an intracellular signaling pathway that involves IRS1 and AKT1/PKB.

Application Notes

Titration of the Insulin Receptor Related antibody may be required due to differences in protocols and secondary/substrate sensitivity.

Immunogen

This Insulin Receptor Related antibody was produced from a rabbit immunized with a KLH conjugated synthetic peptide between 668-702 amino acids from the Central region of human INSRR.

Storage

Aliquot the Insulin Receptor Related antibody and store frozen at -20oC or colder. Avoid repeated freeze-thaw cycles.