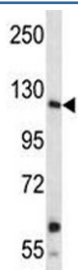


Insulin Receptor R Antibody / INSRR (F44161)

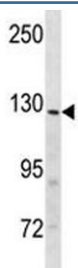
Catalog No.	Formulation	Size
F44161-0.4ML	In 1X PBS, pH 7.4, with 0.09% sodium azide	0.4 ml
F44161-0.08ML	In 1X PBS, pH 7.4, with 0.09% sodium azide	0.08 ml

[Bulk quote request](#)

Availability	1-3 business days
Species Reactivity	Human, Mouse
Predicted Reactivity	Rat
Format	Antigen affinity purified
Host	Rabbit
Clonality	Polyclonal (rabbit origin)
Isotype	Rabbit Ig
Purity	Antigen affinity
UniProt	Q9WTL4
Applications	Western Blot : 1:1000
Limitations	This Insulin Receptor R antibody is available for research use only.



Insulin receptor R antibody western blot analysis in A549 lysate. Expected molecular weight: ~80 kDa, 144 kDa.



Insulin receptor R antibody western blot analysis in mouse heart tissue lysate. Expected molecular weight: ~80 kDa, 144 kDa.

Description

Insulin receptor related protein is a receptor that binds an insulin related protein and has a tyrosine-protein kinase activity. It phosphorylates the insulin receptor substrates IRS-1 and IRS-2.

Application Notes

Titration of the Insulin Receptor R antibody may be required due to differences in protocols and secondary/substrate sensitivity.

Immunogen

A portion of amino acids 1228-1255 from the mouse protein was used as the immunogen for this Insulin Receptor R antibody.

Storage

Aliquot the Insulin Receptor R antibody and store frozen at -20oC or colder. Avoid repeated freeze-thaw cycles.