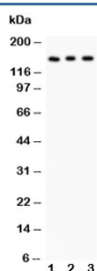


## Insulin Receptor Antibody (R30701)

Catalog No.	Formulation	Size
R30701	0.5mg/ml if reconstituted with 0.2ml sterile DI water	100 ug

**Bulk quote request**

<b>Availability</b>	1-3 business days
<b>Species Reactivity</b>	Human, Mouse, Rat
<b>Format</b>	Antigen affinity purified
<b>Clonality</b>	Polyclonal (rabbit origin)
<b>Isotype</b>	Rabbit IgG
<b>Purity</b>	Antigen affinity
<b>Buffer</b>	Lyophilized from 1X PBS with 2.5% BSA and 0.025% sodium azide/thimerosal
<b>UniProt</b>	P06213
<b>Applications</b>	Western Blot : 0.5-1ug/ml
<b>Limitations</b>	This Insulin Receptor antibody is available for research use only.



Western blot testing of Insulin Receptor antibody and Lane 1: rat kidney; 2: PANC; 3: HeLa lysate. Expected molecular weight ~156 kDa.

## Description

INSR (Insulin Receptor) is a tetramer of two alpha and two beta subunits that are coded by a single gene and are joined by disulfide bonds, a mechanism parallel to that of its ligand, insulin. It belongs to the large class of tyrosine kinase receptors. The insulin receptor mediates their activity by causing the addition of a phosphate group to particular tyrosines on certain proteins within a cell. The INSR gene spans more than 120 kb and has 22 exons. Functional studies of the INSR SNPs show no effect on mRNA levels or splicing in peripheral blood leukocytes or on binding of insulin to mononuclear cells.

## Application Notes

The stated application concentrations are suggested starting points. Titration of the Insulin Receptor antibody may be required due to differences in protocols and secondary/substrate sensitivity.

## Immunogen

Amino acids 1353-1372 (RSYEEHIPYTHMNGGKKNGR) were used as the immunogen for this Insulin Receptor antibody.

## Storage

After reconstitution, the Insulin Receptor antibody can be stored for up to one month at 4°C. For long-term, aliquot and store at -20°C. Avoid repeated freezing and thawing.