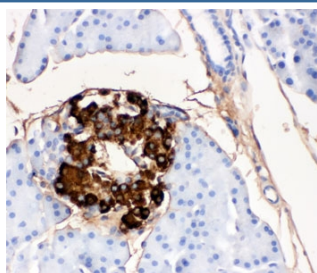


Insulin Antibody [clone KC36AC10] (R30045)

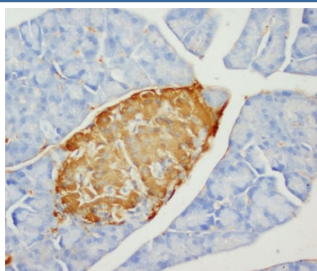
Catalog No.	Formulation	Size
R30045	0.5mg/ml with 1% BSA and 0.01% sodium azide if reconstituted with 0.2ml sterile 1X PBS	100 ug

Bulk quote request

Availability	1-3 business days
Species Reactivity	Human, Rabbit, Rat
Format	Ascites
Clonality	Monoclonal (mouse origin)
Isotype	Mouse IgG1
Clone Name	KC36AC10
Purity	Ascites
Gene ID	3630
Applications	Immunohistochemistry (FFPE) : 0.5-1ug/ml
Limitations	This Insulin antibody is available for research use only.



IHC-P testing of rat pancreas tissue with insulin antibody. HIER: Boil the paraffin sections in pH 6, 10mM citrate buffer for 20 minutes and allow to cool prior to testing.



IHC-P testing of rat pancreas tissue with insulin antibody. HIER: Boil the paraffin sections in pH 6, 10mM citrate buffer for 20 minutes and allow to cool prior to testing.

Description

Insulin, synthesized by the beta cells of the islets of Langerhans, consists of two dissimilar polypeptide chains, A and B, which are linked by two disulfide bonds. The gene contains 3 exons and 2 introns; exon 2 encodes the signal peptide, the B chain, and part of the C peptide, while exon 3 encodes the remainder of the C peptide and the A chain.

Application Notes

The stated application concentrations are suggested starting points. Titration of the Insulin antibody may be required due to differences in protocols and secondary/substrate sensitivity.

Immunogen

Human insulin was used as the immunogen for this Insulin antibody.

Storage

After reconstitution, the Insulin antibody can be stored for up to one month at 4°C. For long-term, aliquot and store at -20°C. Avoid repeated freezing and thawing.