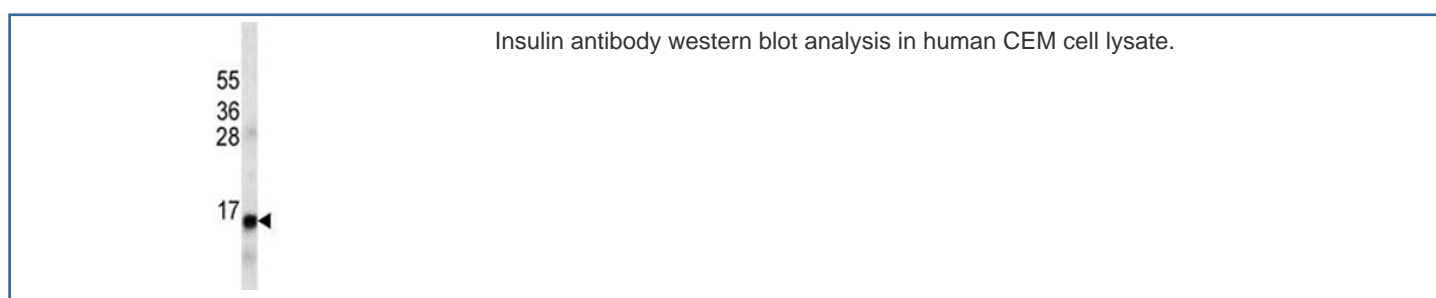


Insulin Antibody [clone 396CT20.4.4] (F53596)

Catalog No.	Formulation	Size
F53596-0.1ML	In ascites with 0.09% sodium azide	0.1 ml

[Bulk quote request](#)

Availability	1-3 business days
Species Reactivity	Human
Format	Ascites
Host	Mouse
Clonality	Monoclonal (mouse origin)
Isotype	Mouse IgM
Clone Name	396CT20.4.4
Purity	Ascites
UniProt	P01308
Applications	Western Blot : 1:1000-1:8000
Limitations	This Insulin antibody is available for research use only.



Description

After removal of the precursor signal peptide, proinsulin is post-translationally cleaved into three peptides: the B chain and A chain peptides, which are covalently linked via two disulfide bonds to form insulin, and C-peptide. Binding of insulin to the insulin receptor (INSR) stimulates glucose uptake. A multitude of mutant alleles with phenotypic effects have been identified. There is a read-through gene, INS-IGF2, which overlaps with this gene at the 5' region and with the IGF2 gene at the 3' region. Alternative splicing results in multiple transcript variants. [provided by RefSeq].

Application Notes

Titration of the Insulin antibody may be required due to differences in protocols and secondary/substrate sensitivity.

Immunogen

A portion of amino acids 35-64 from the human protein was used as the immunogen for this Insulin antibody.

Storage

Aliquot the Insulin antibody and store frozen at -20oC or colder. Avoid repeated freeze-thaw cycles.