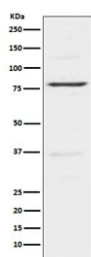


INSRR Antibody / Insulin Receptor Related [clone ADOI-9] (RQ5424)

Catalog No.	Formulation	Size
RQ5424	Antibody in PBS with 0.02% sodium azide, 50% glycerol and 0.4-0.5mg/ml BSA	100 ul

Bulk quote request

Availability	1-2 weeks
Species Reactivity	Human, Mouse, Rat
Format	Purified
Clonality	Rabbit Monoclonal
Isotype	Rabbit IgG
Clone Name	ADOI-9
Purity	Affinity purified
UniProt	P14616
Applications	Western Blot : 1:500-1:2000
Limitations	This INSRR antibody is available for research use only.



Western blot testing of human HeLa cell lysate with INSRR antibody. Expected molecular weight: ~80 kDa, 144 kDa.

Description

This receptor probably binds an insulin related protein and has a tyrosine-protein kinase activity. It phosphorylates the insulin receptor substrates IRS-1 and IRS-2. [UniProt]

Application Notes

Optimal dilution of the INSRR antibody should be determined by the researcher.

Immunogen

A synthetic peptide specific to human Insulin Receptor Related / INSRR was used as the immunogen for the INSRR antibody.

Storage

Store the INSRR antibody at -20oC.