

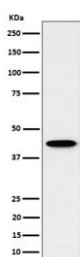
## Inositol-tetrakisphosphate 1-kinase Antibody / ITPK1 [clone 29I50] (RQ8660)

Catalog No.	Formulation	Size
RQ8660	Antibody in PBS with 0.02% sodium azide, 50% glycerol and 0.4-0.5mg/ml BSA	100 ul

Recombinant **RABBIT MONOCLONAL**

[Bulk quote request](#)

Availability	1-3 days
Species Reactivity	Human
Format	Purified
Clonality	Recombinant Rabbit Monoclonal
Isotype	Rabbit IgG
Clone Name	29I50
Purity	Affinity chromatography
UniProt	Q13572
Applications	Western Blot : 1:500-1:2000
Limitations	This Inositol-tetrakisphosphate 1-kinase antibody is available for research use only.



Western blot testing of human HepG2 cell lysate with Inositol-tetrakisphosphate 1-kinase antibody. Predicted molecular weight ~46 kDa.

### Description

Inositol-tetrakisphosphate 1-kinase (ITPK1) regulates the synthesis of inositol tetraphosphate, and downstream products, inositol pentakisphosphate and inositol hexakisphosphate.

### Application Notes

Optimal dilution of the Inositol-tetrakisphosphate 1-kinase antibody should be determined by the researcher.

## Immunogen

A synthetic peptide specific to human Inositol-tetrakisphosphate 1-kinase protein was used as the immunogen for the Inositol-tetrakisphosphate 1-kinase Antibody.

## Storage

Store the Inositol-tetrakisphosphate 1-kinase antibody at -20oC.