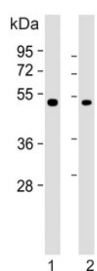


## Inhibin beta B chain Antibody / INHBB (F54580)

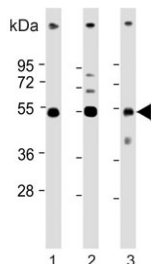
Catalog No.	Formulation	Size
F54580-0.4ML	In 1X PBS, pH 7.4, with 0.09% sodium azide	0.4 ml
F54580-0.08ML	In 1X PBS, pH 7.4, with 0.09% sodium azide	0.08 ml

**Bulk quote request**

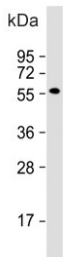
<b>Availability</b>	1-3 business days
<b>Species Reactivity</b>	Human, Mouse
<b>Format</b>	Purified
<b>Clonality</b>	Polyclonal (rabbit origin)
<b>Isotype</b>	Rabbit Ig
<b>Purity</b>	Antigen affinity purified
<b>UniProt</b>	P09529
<b>Applications</b>	Immunohistochemistry (FFPE) : 1:25 Western Blot : 1:500-1:2000
<b>Limitations</b>	This Inhibin beta B chain antibody is available for research use only.



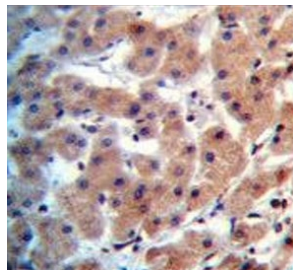
Western blot testing of human 1) A549 and 2) SK-BR-3 cell lysate with Inhibin beta B chain antibody. Expected molecular weight: 17 kDa (mature form), 42 kDa (pro peptide form) and 55 kDa (pro form).



Western blot testing of 1) human A549, 2) human PC-3 and 3) mouse testis lysate with Inhibin beta B chain antibody. Expected molecular weight: 17 kDa (mature form), 42 kDa (pro peptide form) and 55 kDa (pro form).



Western blot testing of mouse uterus lysate with Inhibin beta B chain antibody. Expected molecular weight: 17 kDa (mature form), 42 kDa (pro peptide form) and 55 kDa (pro form).



IHC testing of FFPE human uterus tissue with Inhibin beta B chain antibody. HIER: steam section in pH6 citrate buffer for 20 min and allow to cool prior to staining.

## Description

The inhibin beta B subunit joins the alpha subunit to form a pituitary FSH secretion inhibitor. Inhibin has been shown to regulate gonadal stromal cell proliferation negatively and to have tumour-suppressor activity. In addition, serum levels of inhibin have been shown to reflect the size of granulosa-cell tumors and can therefore be used as a marker for primary as well as recurrent disease. Because expression in gonadal and various extragonadal tissues may vary severalfold in a tissue-specific fashion, it is proposed that inhibin may be both a growth/differentiation factor and a hormone. Furthermore, the beta B subunit forms a homodimer, activin B, and also joins with the beta A subunit to form a heterodimer, activin AB, both of which stimulate FSH secretion.

## Application Notes

The stated application concentrations are suggested starting points. Titration of the Inhibin beta B chain antibody may be required due to differences in protocols and secondary/substrate sensitivity.

## Immunogen

A portion of amino acids 369-397 from the human protein was used as the immunogen for the Inhibin beta B chain antibody.

## Storage

Aliquot the Inhibin beta B chain antibody and store frozen at -20°C or colder. Avoid repeated freeze-thaw cycles.