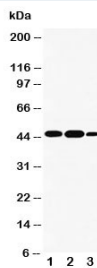


INDOL1 Antibody (R30692)

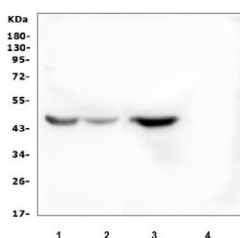
Catalog No.	Formulation	Size
R30692	0.5mg/ml if reconstituted with 0.2ml sterile DI water	100 ug

[Bulk quote request](#)

Availability	1-3 business days
Species Reactivity	Human
Format	Antigen affinity purified
Host	Rabbit
Clonality	Polyclonal (rabbit origin)
Isotype	Rabbit IgG
Purity	Antigen affinity
Buffer	Lyophilized from 1X PBS with 2.5% BSA and 0.025% sodium azide/thimerosal
UniProt	Q6ZQW0
Applications	Western Blot : 0.5-1ug/ml
Limitations	This INDOL1 antibody is available for research use only.



INDOL1 Antibody WB. Western blot testing of INDOL1 antibody and Lane 1: human A549; 2: human placenta; 3: human A431 cell lysate. Expected molecular weight: ~47 kDa.



INDOL1 Antibody Human Sample WB. Western blot testing of human 1) A549, 2) placenta, 3) Caco-2 and 4) PC-3 cell lysate with INDOL1 antibody. Predicted molecular weight ~47 kDa.

Description

INDOL1 Antibody detects IDO2 (Indoleamine 2,3-dioxygenase 2), also called Indoleamine 2,3-dioxygenase-like 1, an enzyme encoded by the INDOL1 gene which metabolizes tryptophan in the kynurenine pathway. By genomic sequence analysis, the gene is mapped on chromosome 8p12 just downstream of the INDO gene. And its exact cytogenetic location is 8p11.21. By database analysis using INDO as probe, followed by RT-PCR of total RNA from various tissues, IDO2 is cloned by human and mouse INDOL1. INDOL1 catabolizes tryptophan as determined by Kyn production, but unlike INDO, is inhibited by D-1-methyl-tryptophan(D-1MT) but not the L-1MT stereoisomer.

This antibody can be compared with our [IDO2 Antibody \(clone IDO2/2640\)](#) for consistent detection of IDO2 across tryptophan metabolism and immune regulatory studies.

Application Notes

The stated application concentrations are suggested starting amounts. Titration of the INDOL1 antibody may be required due to differences in protocols and secondary/substrate sensitivity.

Immunogen

Amino acids 1-20 (MLHFHYDTSNKIMEPHRPN-human) were used as the immunogen for this INDOL1 antibody.

Storage

After reconstitution, the INDOL1 antibody can be stored for up to one month at 4oC. For long-term, aliquot and store at -20oC. Avoid repeated freezing and thawing.