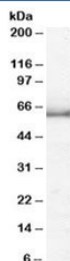


Importin alpha 5 Antibody (R36307)

Catalog No.	Formulation	Size
R36307-100UG	0.5 mg/ml in 1X TBS, pH7.3, with 0.5% BSA (US sourced) and 0.02% sodium azide	100 ug

[Bulk quote request](#)

Availability	1-3 business days
Species Reactivity	Human
Predicted Reactivity	Cow, Dog, Mouse, Pig, Rat
Format	Antigen affinity purified
Host	Goat
Clonality	Polyclonal (goat origin)
Isotype	Goat Ig
Purity	Antigen affinity
Gene ID	3836
Applications	Western Blot : 1-3ug/ml ELISA (peptide) LOD : 1:32000
Limitations	This Importin alpha 5 antibody is available for research use only.



Western blot testing of HeLa lysate with Importin 5 alpha antibody at 1ug/ml.
Predicted/observed molecular weight: ~60 kDa.

Description

Additional name(s) for this target protein: KPNA1

Application Notes

Optimal dilution of the Importin alpha 5 antibody should be determined by the researcher.

Immunogen

Amino acids TTPGKENFRLKSY were used as the immunogen for this Importin alpha 5 antibody.

Storage

Aliquot and store the Importin alpha 5 antibody at -20oC.