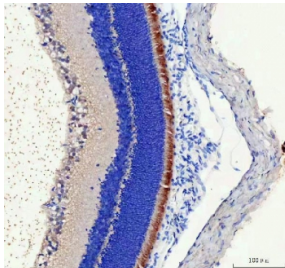


## IMPG2 Antibody / Interphotoreceptor matrix proteoglycan 2 (RQ8606)

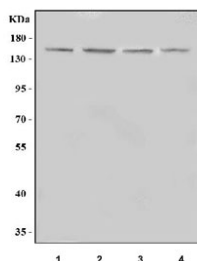
Catalog No.	Formulation	Size
RQ8606	0.5mg/ml if reconstituted with 0.2ml sterile DI water	100 ug

[Bulk quote request](#)

<b>Availability</b>	1-3 days
<b>Species Reactivity</b>	Human, Mouse, Rat
<b>Format</b>	Antigen affinity purified
<b>Host</b>	Rabbit
<b>Clonality</b>	Polyclonal (rabbit origin)
<b>Isotype</b>	Rabbit IgG
<b>Purity</b>	Antigen affinity purified
<b>Buffer</b>	Lyophilized from 1X PBS with 2% Trehalose
<b>UniProt</b>	Q9BZV3
<b>Applications</b>	Western Blot : 0.5-1ug/ml Immunohistochemistry (FFPE) : 2-5ug/ml ELISA : 0.1-0.5ug/ml
<b>Limitations</b>	This IMPG2 antibody is available for research use only.



IHC staining of FFPE rat retina tissue with IMPG2 antibody. HIER: boil tissue sections in pH8 EDTA for 20 min and allow to cool before testing.



Western blot testing of 1) human HEL, 2) human K562, 3) rat testis and 4) mouse NIH 3T3 cell lysate with IMPG2 antibody. Predicted molecular weight ~139 kDa but may be observed at higher molecular weights due to glycosylation.

## Description

The protein encoded by this gene binds chondroitin sulfate and hyaluronan and is a proteoglycan. The encoded protein plays a role in the organization of the interphotoreceptor matrix and may promote the growth and maintenance of the light-sensitive photoreceptor outer segment. Defects in this gene are a cause of retinitis pigmentosa type 56 and maculopathy, IMPG2-related.

## Application Notes

Optimal dilution of the IMPG2 antibody should be determined by the researcher.

## Immunogen

An E.coli-derived human recombinant protein (amino acids R81-R1080) was used as the immunogen for the IMPG2 antibody.

## Storage

After reconstitution, the IMPG2 antibody can be stored for up to one month at 4oC. For long-term, aliquot and store at -20oC. Avoid repeated freezing and thawing.