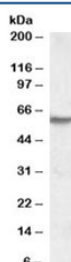


IMPDH2 Antibody (R34397)

Catalog No.	Formulation	Size
R34397-100UG	0.5 mg/ml in 1X TBS, pH7.3, with 0.5% BSA (US sourced) and 0.02% sodium azide	100 ug

[Bulk quote request](#)

Availability	1-3 business days
Species Reactivity	Human
Format	Antigen affinity purified
Host	Goat
Clonality	Polyclonal (goat origin)
Isotype	Goat Ig
Purity	Antigen affinity
Gene ID	3615
Applications	Western Blot : 1-3ug/ml ELISA (peptide) LOD : 1:8000
Limitations	This IMPDH2 antibody is available for research use only.



Western blot testing of human skeletal muscle lysate with IMPDH2 antibody at 1ug/ml.
Predicted molecular weight: ~56kDa.

Description

Additional name(s) for this target protein: Inosine monophosphate dehydrogenase 2

Application Notes

Optimal dilution of the IMPDH2 antibody should be determined by the researcher.

Immunogen

Amino acids KEEEHDCFLEEI were used as the immunogen for this IMPDH2 antibody.

Storage

Aliquot and store the IMPDH2 antibody at -20oC.