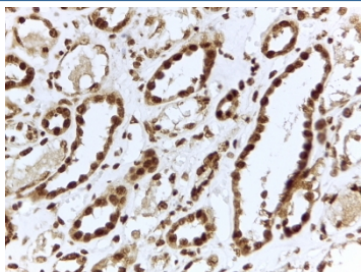


ILF3 Antibody (R35335)

Catalog No.	Formulation	Size
R35335-100UG	0.5 mg/ml in 1X TBS, pH7.3, with 0.5% BSA (US sourced) and 0.02% sodium azide	100 ug

[Bulk quote request](#)

Availability	1-3 business days
Species Reactivity	Human
Predicted Reactivity	Cow, Dog, Rat
Format	Antigen affinity purified
Host	Goat
Clonality	Polyclonal (goat origin)
Isotype	Goat Ig
Purity	Antigen affinity
Gene ID	3609
Applications	Immunohistochemistry (FFPE) : 2-4ug/ml ELISA (peptide) LOD : 1:32000
Limitations	This ILF3 antibody is available for research use only.



IHC testing of FFPE human kidney with ILF3 antibody at 2ug/ml. HIER: steamed with pH6 citrate buffer, HRP-staining.

Description

Additional name(s) for this target protein: Interleukin enhancer binding factor 3

Application Notes

Optimal dilution of the ILF3 antibody should be determined by the researcher.

1. This ILF3 antibody is specific for isoforms a and d.

Immunogen

Amino acids QKPSYGSYGQSHQGQ were used as the immunogen for this ILF3 antibody.

Storage

Aliquot and store the ILF3 antibody at -20oC.