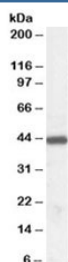


ILF2 Antibody / Interleukin enhancer-binding factor 2 (R33817)

Catalog No.	Formulation	Size
R33817-100UG	0.5 mg/ml in 1X TBS, pH7.3, with 0.5% BSA (US sourced) and 0.02% sodium azide	100 ug

[Bulk quote request](#)

Availability	1-3 business days
Species Reactivity	Human
Predicted Reactivity	Mouse, Rat, Dog
Format	Antigen affinity purified
Clonality	Polyclonal (goat origin)
Isotype	Goat Ig
Purity	Antigen affinity
Gene ID	3608
Applications	Western Blot : 0.03-0.1ug/ml ELISA (peptide) LOD : 1:4000
Limitations	This ILF2 antibody is available for research use only.



Western blot testing of human tonsil lysate with ILF2 antibody at 0.03ug/ml. Expected molecular weight: 43-45 kDa.

Description

Additional name(s) for this target protein: NF45, Interleukin enhancer binding factor 2

Application Notes

Optimal dilution of the ILF2 antibody should be determined by the researcher.

Immunogen

Amino acids EKAYEKPPEKKEG were used as the immunogen for this ILF2 antibody.

Storage

Aliquot and store the ILF2 antibody at -20oC.