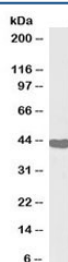


## ILF2 Antibody Biotin Conjugate (R33817BTN)

Catalog No.	Formulation	Size
R33817BTN	0.5 mg/ml in 1X TBS, pH7.3, with 0.5% BSA (US sourced) and 0.02% sodium azide	100 ug

[Bulk quote request](#)

Availability	1-3 business days
Species Reactivity	Human
Predicted Reactivity	Dog, Mouse, Rat
Format	Biotin Conjugate
Clonality	Polyclonal (goat origin)
Isotype	Goat Ig
Purity	Antigen affinity
Gene ID	3608
Applications	Western Blot : 0.1-0.3ug/ml ELISA (peptide) LOD : 1:4000
Limitations	This ILF2 antibody is available for research use only.



Western blot testing of human tonsil lysate with biotinylated ILF2 antibody at 0.1ug/ml.  
Expected molecular weight: 43-45 kDa.

### Description

Additional name(s) for this target protein: NF45, Interleukin enhancer binding factor 2

### Application Notes

Optimal dilution of the ILF2 antibody should be determined by the researcher.

### Immunogen

Amino acids EKAYEKPPEKKEG were used as the immunogen for this ILF2 antibody.

## **Storage**

Aliquot and store the ILF2 antibody at -20oC.