

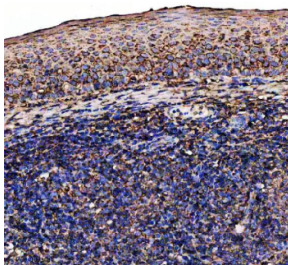
IL7RA Antibody / Interleukin-7 receptor alpha / CD127 [clone 22I71] (RQ8889)

Catalog No.	Formulation	Size
RQ8889	Antibody in PBS with 0.02% sodium azide, 50% glycerol and 0.4-0.5mg/ml BSA	100 ul

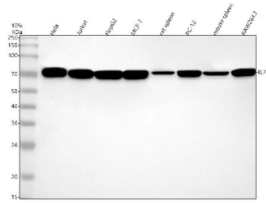
Recombinant **RABBIT MONOCLONAL**

[Bulk quote request](#)

Availability	1-3 days
Species Reactivity	Human, Mouse, Rat
Format	Purified
Clonality	Recombinant Rabbit Monoclonal
Isotype	Rabbit IgG
Clone Name	22I71
Purity	Affinity chromatography
UniProt	P16871
Localization	Cell membrane, secreted
Applications	Western Blot : 1:500 Immunohistochemistry (FFPE) : 1:50
Limitations	This IL7RA antibody is available for research use only.



IHC staining of FFPE human tonsil tissue with IL7RA antibody, HRP-secondary and DAB substrate. HIER: boil tissue sections in pH8 EDTA for 20 min and allow to cool before testing.



Western blot testing of 1) human HeLa, 2) human Jurkat, 3) human HepG2, 4) human MCF7, 5) rat spleen, 6) rat PC-12, 7) mouse spleen and 8) mouse RAW264.7 cell lysate with IL7RA antibody. Predicted molecular weight ~52kDa but can be observed at higher molecular weights due to glycosylation.

Description

Interleukin-7 receptor alpha (IL7RA) is a type I transmembrane glycoprotein that forms part of the receptor complex for interleukin-7 (IL-7) and thymic stromal lymphopoietin (TSLP). It plays a crucial role in lymphocyte development, survival, and homeostasis, particularly in T-cell and B-cell biology.

Genetic variations in IL7RA have been associated with susceptibility to autoimmune diseases, such as multiple sclerosis and type 1 diabetes, as well as immune deficiency disorders. IL7RA signaling regulates lymphocyte proliferation, differentiation, and maintenance, making it a valuable focus for immunological and therapeutic research.

Using a high-quality IL7RA antibody enables accurate detection of the protein in applications including western blot, immunohistochemistry, and flow cytometry. An IL7RA antibody from NSJ Bioreagents delivers consistent and reproducible performance for studies on immune signaling, lymphocyte biology, and disease pathogenesis. Selecting the right IL7RA antibody ensures reliable results in both basic research and clinical investigations.

Application Notes

Optimal dilution of the IL7RA antibody should be determined by the researcher.

Immunogen

A peptide sequence specific to Interleukin-7 receptor alpha was used as the immunogen for the IL7RA antibody.

Storage

After reconstitution, the IL7RA antibody can be stored for up to one month at 4°C. For long-term, aliquot and store at -20°C. Avoid repeated freezing and thawing.