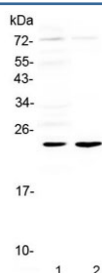


IL6 Antibody (R32997)

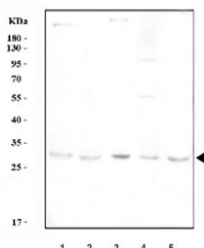
Catalog No.	Formulation	Size
R32997	0.5mg/ml if reconstituted with 0.2ml sterile DI water	100 ug

Bulk quote request

Availability	1-3 business days
Species Reactivity	Mouse, Rat
Format	Antigen affinity purified
Host	Rabbit
Clonality	Polyclonal (rabbit origin)
Isotype	Rabbit IgG
Purity	Antigen affinity purified
Buffer	Lyophilized from 1X PBS with 2% Trehalose and 0.025% sodium azide
UniProt	P20607
Applications	Western Blot : 0.5-1ug/ml
Limitations	This IL6 antibody is available for research use only.



Western blot testing of 1) rat heart and 2) mouse heart tissue lysate with IL6 antibody at 0.5ug/ml. Predicted molecular weight ~24 kDa but may be observed at higher molecular weights due to glycosylation.



Western blot testing of 1) rat spleen, 2) mouse spleen, 3) mouse ANA-1, 4) mouse RAW264.7 and 5) mouse EL-4 cell lysate lysate with IL6 antibody at 0.5ug/ml. Predicted molecular weight ~24 kDa but may be observed at higher molecular weights due to glycosylation.

Description

Interleukin-6 (IL-6) is a protein that in humans is encoded by the IL6 gene. IL-6 is an interleukin that acts as both a pro-inflammatory and anti-inflammatory cytokine. It is secreted by T cells and macrophages to stimulate immune response to trauma, especially burns or other tissue damage leading to inflammation. IL-6 is one of the most important mediators of fever and of the acute phase response. IL-6 is also essential for hybridoma growth and is found in many supplemental cloning media such as briclone. By in situ hybridization and Southern blot analysis of mouse-human hybrid cell lines, the IL6 gene is mapped to chromosome 7p15.

Application Notes

Optimal dilution of the IL6 antibody should be determined by the researcher.

Immunogen

Amino acids KTIQLILKALEEFLKVTMRSTRQT from the rat protein were used as the immunogen for the IL6 antibody.

Storage

After reconstitution, the IL6 antibody can be stored for up to one month at 4°C. For long-term, aliquot and store at -20°C. Avoid repeated freezing and thawing.