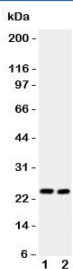


IL6 Antibody (R31466)

Catalog No.	Formulation	Size
R31466	0.5mg/ml if reconstituted with 0.2ml sterile DI water	100 ug

[Bulk quote request](#)

Availability	1-3 business days
Species Reactivity	Mouse
Format	Antigen affinity purified
Host	Rabbit
Clonality	Polyclonal (rabbit origin)
Isotype	Rabbit IgG
Purity	Antigen affinity
Buffer	Lyophilized from 1X PBS with 2.5% BSA and 0.025% sodium azide
Gene ID	16193
Applications	Western Blot : 0.5-1ug/ml ELISA : 0.1-0.5ug/ml (mouse protein tested); request BSA free format for coating
Limitations	This IL6 antibody is available for research use only.



Western blot testing of IL6 antibody and Lane 1: mouse HEPA1-6; 2: (m) NIH3T3 lysate. Expected molecular weight ~24 kDa.

Description

Interleukin-6 (IL-6) is a protein that in humans is encoded by the IL6 gene. IL-6 is an interleukin that acts as both a pro-inflammatory and anti-inflammatory cytokine. It is secreted by T cells and macrophages to stimulate immune response to trauma, especially burns or other tissue damage leading to inflammation. IL-6 is one of the most important mediators of fever and of the acute phase response. IL-6 is also essential for hybridoma growth and is found in many supplemental cloning media such as briclone.

For additional validated antibodies targeting this important inflammatory cytokine, visit our [IL6 Antibody / Pro-Inflammatory Cytokine Marker](#) page featuring complementary reagents for studies of cytokine signaling, immune activation, and inflammation-associated disease processes.

Application Notes

Variations in secondary/substrate sensitivities and test protocols may require the IL6 antibody to be titrated for optimal performance.

Immunogen

Mouse partial recombinant protein (AA 25-211) was used as the immunogen for this IL6 antibody.

Storage

After reconstitution, the IL6 antibody can be stored for up to one month at 4oC. For long-term, aliquot and store at -20oC. Avoid repeated freezing and thawing.