

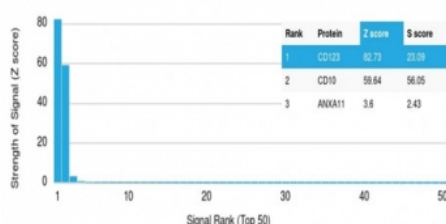
## IL3RA Antibody / CD123 [clone IL3RA/2065] (V8952)

Catalog No.	Formulation	Size
V8952-100UG	0.2 mg/ml in 1X PBS with 0.1 mg/ml BSA (US sourced), 0.05% sodium azide	100 ug
V8952-20UG	0.2 mg/ml in 1X PBS with 0.1 mg/ml BSA (US sourced), 0.05% sodium azide	20 ug
V8952SAF-100UG	1 mg/ml in 1X PBS; BSA free, sodium azide free	100 ug

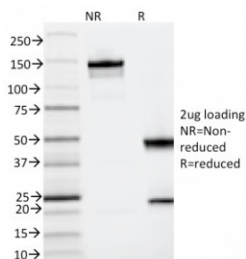
[Bulk quote request](#)

<b>Availability</b>	1-3 business days
<b>Species Reactivity</b>	Human
<b>Format</b>	Purified
<b>Host</b>	Mouse
<b>Clonality</b>	Monoclonal (mouse origin)
<b>Isotype</b>	Mouse IgG2a, kappa
<b>Clone Name</b>	IL3RA/2065
<b>Purity</b>	Protein A/G affinity
<b>UniProt</b>	P26951
<b>Localization</b>	Cell surface and cytoplasm
<b>Applications</b>	ELISA : 2-4ug/ml (order BSA-free format for coating)
<b>Limitations</b>	This IL3RA antibody is available for research use only.

Human Protein Microarray Specificity Validation



Analysis of HuProt(TM) microarray containing more than 19,000 full-length human proteins using IL3RA antibody (clone IL3RA/2065). These results demonstrate the foremost specificity of the IL3RA/2065 mAb. Z- and S- score: The Z-score represents the strength of a signal that an antibody (in combination with a fluorescently-tagged anti-IgG secondary Ab) produces when binding to a particular protein on the HuProt(TM) array. Z-scores are described in units of standard deviations (SD's) above the mean value of all signals generated on that array. If the targets on the HuProt(TM) are arranged in descending order of the Z-score, the S-score is the difference (also in units of SD's) between the Z-scores. The S-score therefore represents the relative target specificity of an Ab to its intended target.



SDS-PAGE analysis of purified, BSA-free IL3RA antibody (clone IL3RA/2065) as confirmation of integrity and purity.

## Description

CD123 is an interleukin 3 specific subunit of a heterodimeric cytokine receptor. The receptor is comprised of a ligand specific alpha subunit and a signal transducing beta subunit shared by the receptors for interleukin 3 (IL3), colony stimulating factor 2 (CSF2/GM-CSF), and interleukin 5 (IL5). The binding of this protein to IL3 depends on the beta subunit. The beta subunit is activated by the ligand binding, and is required for the biological activities of IL3. This gene and the gene encoding the colony stimulating factor 2 receptor alpha chain (CSF2RA) form a cytokine receptor gene cluster in a X-Y pseudo-autosomal region on chromosomes X or Y.

## Application Notes

Optimal dilution of the IL3RA antibody should be determined by the researcher.

## Immunogen

A portion of amino acids 26-171 was used as the immunogen for the IL3RA antibody.

## Storage

Aliquot the IL3RA antibody and store frozen at -20oC or colder. Avoid repeated freeze-thaw cycles.