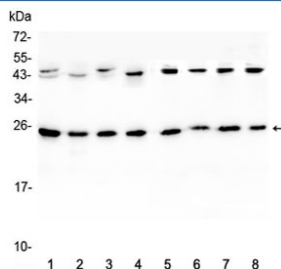


IL36A Antibody / IL-36 alpha (RQ4475)

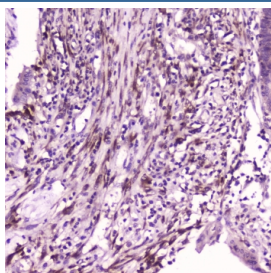
Catalog No.	Formulation	Size
RQ4475	0.5mg/ml if reconstituted with 0.2ml sterile DI water	100 ug

Bulk quote request

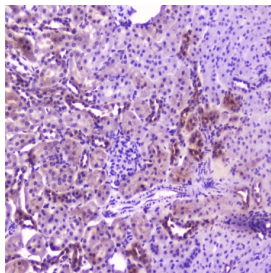
Availability	1-3 business days
Species Reactivity	Human, Mouse, Rat
Format	Antigen affinity purified
Clonality	Polyclonal (rabbit origin)
Isotype	Rabbit IgG
Purity	Antigen affinity
Buffer	Lyophilized from 1X PBS with 2% Trehalose and 0.025% sodium azide
UniProt	Q9UHA7
Localization	Secreted
Applications	Western Blot : 0.5-1ug/ml Immunohistochemistry (FFPE) : 1-2ug/ml ELISA (capture) : 1-5ug/ml
Limitations	This IL36A antibody is available for research use only.



Western blot testing of 1) rat brain, 2) rat lung, 3) mouse brain, 4) mouse lung and human 5) HeLa, 6) placenta, 7) MCF7 and 8) HepG2 lystate with IL36A antibody at 0.5ug/ml. Predicted molecular weight ~17 kDa, routinely observed at 18-22 kDa.



IHC testing of FFPE human intestinal cancer with IL36A antibody at 2ug/ml. HIER: boil tissue sections in pH6, 10mM citrate buffer, for 10-20 min followed by cooling at RT for 20 min.



IHC testing of FFPE rat kidney with IL36A antibody at 2ug/ml. HIER: boil tissue sections in pH6, 10mM citrate buffer, for 10-20 min followed by cooling at RT for 20 min.

Description

Interleukin-36 alpha also known as interleukin-1 family member 6 (IL1F6) is a protein that in humans is encoded by the IL36A gene. The protein encoded by this gene is a cytokine that can activate NF-kappa-B and MAPK signaling pathways to generate an inflammatory response. The encoded protein functions primarily in skin and demonstrates increased expression in psoriasis. In addition, decreased expression of this gene has been linked to a poor prognosis in both hepatocellular carcinoma and colorectal cancer patients.

Application Notes

Optimal dilution of the IL36A antibody should be determined by the researcher.

Immunogen

Human IL-36 alpha recombinant protein (amino acids K6-D151) was used as the immunogen for the IL36A antibody.

Storage

After reconstitution, the IL36A antibody can be stored for up to one month at 4°C. For long-term, aliquot and store at -20°C. Avoid repeated freezing and thawing.