

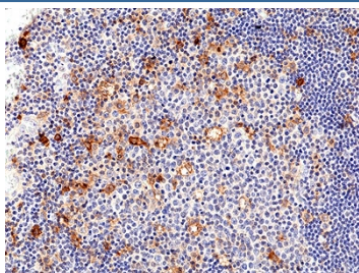
## IL2RA Antibody / CD25 [clone RM418] (R20434)

Catalog No.	Formulation	Size
R20434-0.1ML	Antibody in PBS with 50% glycerol, 1% BSA and 0.09% sodium azide	100 ul

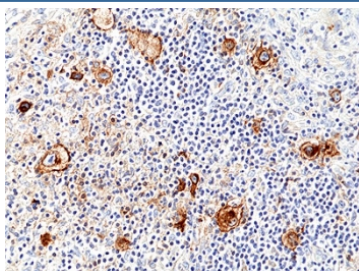
Recombinant **RABBIT MONOCLONAL**

[Bulk quote request](#)

Availability	1-3 business days
Species Reactivity	Human
Format	Purified
Clonality	Recombinant Rabbit Monoclonal
Isotype	Rabbit IgG
Clone Name	RM418
Purity	Protein A purified from animal origin-free supernatant
UniProt	P01589
Localization	Cell surface
Applications	Immunohistochemistry (FFPE) : 1:50-1:100
Limitations	This recombinant IL2RA antibody is available for research use only.



IHC staining of FFPE human tonsil tissue with recombinant IL2RA antibody at 1:200.



IHC staining of FFPE human Hodgkin lymphoma tissue with recombinant IL2RA antibody at 1:200.

## Description

This antibody reacts to human CD25 (IL2Ra).

## Application Notes

The stated application concentrations are suggested starting points. Titration of the recombinant IL2RA antibody may be required due to differences in protocols and secondary/substrate sensitivity.

## Immunogen

A peptide corresponding to the N-terminus of human Interleukin-2 receptor subunit alpha was used as the immunogen for the recombinant IL2RA antibody.

## Storage

Store the recombinant IL2RA antibody at -20oC.