

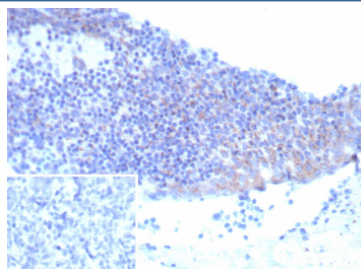
## CD25 Antibody / IL2RA [clone IL2RA/9378R] (V5920)

Catalog No.	Formulation	Size
V5920-100UG	0.2 mg/ml in 1X PBS with 0.05% BSA, 0.05% sodium azide	100 ug
V5920-20UG	0.2 mg/ml in 1X PBS with 0.05% BSA, 0.05% sodium azide	20 ug
V5920SAF-100UG	1 mg/ml in 1X PBS; BSA free, sodium azide free	100 ug

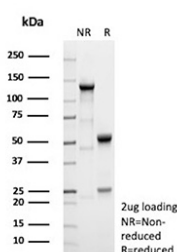
Recombinant **RABBIT MONOCLONAL**

[Bulk quote request](#)

<b>Species Reactivity</b>	Human
<b>Format</b>	Purified
<b>Host</b>	Rabbit
<b>Clonality</b>	Recombinant Rabbit Monoclonal
<b>Isotype</b>	Rabbit IgG, kappa
<b>Clone Name</b>	IL2RA/9378R
<b>UniProt</b>	P01589
<b>Localization</b>	Cell membrane, Cytoplasm
<b>Applications</b>	Immunohistochemistry (FFPE) : 1-2ug/ml
<b>Limitations</b>	This CD25/IL2RA antibody is available for research use only.



Immunohistochemistry analysis of CD25 / IL2RA antibody (clone IL2RA/9378R) in human tonsil. Formalin-fixed, paraffin-embedded human tonsil tissue shows membranous and cytoplasmic brown chromogenic staining in scattered lymphoid cells, consistent with IL2RA-positive immune cell populations. Inset shows a PBS-only negative control processed without primary antibody, demonstrating minimal non-specific background staining.



SDS-PAGE Analysis of purified recombinant CD25/IL2RA antibody (clone IL2RA/9378R). Confirmation of Purity and Integrity of Antibody.

## Description

CD25 antibody targets Interleukin-2 receptor subunit alpha (IL2RA), a type I transmembrane cytokine receptor component that forms the high-affinity interleukin-2 receptor complex together with IL2RB and IL2RG. IL2RA, also widely known as CD25, is primarily localized to the cell membrane and plays a central role in regulating immune activation and cytokine responsiveness. Expression of CD25 is minimal on resting lymphocytes but is rapidly induced following antigen stimulation, making an IL2RA antibody a widely used tool for studying immune activation dynamics.

Interleukin-2 receptor subunit alpha belongs to the type I cytokine receptor family and lacks intrinsic kinase activity, instead functioning by increasing the affinity of the receptor complex for interleukin-2 and enabling downstream signaling through JAK-STAT pathways. CD25 is constitutively expressed at high levels on regulatory T cells, where it supports immune tolerance and suppression of excessive immune responses. Detection with a CD25 / IL2RA antibody is therefore commonly used to identify regulatory T cell populations and to investigate immune homeostasis mechanisms.

Beyond T lymphocytes, IL2RA expression has been observed in activated B cells and certain antigen-presenting cell populations, reflecting broader roles in immune regulation. Altered expression of Interleukin-2 receptor subunit alpha has been linked to autoimmune disease, inflammatory disorders, and hematologic malignancies, highlighting its relevance in immunopathology research. A CD25 antibody enables analysis of IL2RA expression patterns in immune tissues and disease-associated microenvironments.

Structurally, Interleukin-2 receptor subunit alpha is a glycoprotein with an extracellular cytokine-binding domain, a single transmembrane region, and a short cytoplasmic tail. Because IL2RA expression reflects immune activation state rather than antigen specificity, antibody-based detection of CD25 provides a direct readout of cytokine receptor engagement and immune cell activation. Clone IL2RA/9378R is designed to recognize Interleukin-2 receptor subunit alpha and supports detection of IL2RA expression in research applications. NSJ Bioreagents offers this CD25 antibody for studies of immune regulation, cytokine signaling, and T cell biology.

## Application Notes

Optimal dilution of the CD25/IL2RA antibody should be determined by the researcher.

## Immunogen

A recombinant fragment (around amino acids 1-250) of human IL2RA protein (exact sequence is proprietary) was used as the immunogen for the CD25/IL2RA antibody.

## Storage

CD25/IL2RA antibody with sodium azide - store at 2 to 8oC; antibody without sodium azide - store at -20 to -80oC.