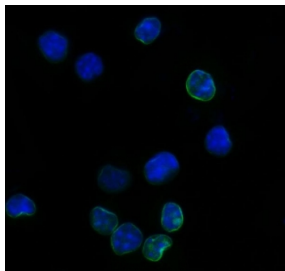


Il2r alpha Antibody / Cd25 (RQ7081)

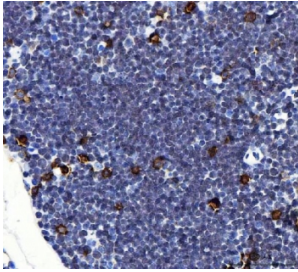
Catalog No.	Formulation	Size
RQ7081	0.5mg/ml if reconstituted with 0.2ml sterile DI water	100 ug

Bulk quote request

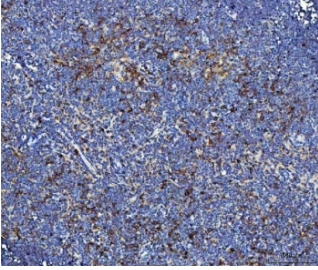
Availability	1-3 business days
Species Reactivity	Mouse, Rat
Format	Antigen affinity purified
Host	Rabbit
Clonality	Polyclonal (rabbit origin)
Isotype	Rabbit IgG
Purity	Antigen affinity purified
Buffer	Lyophilized from 1X PBS with 2% Trehalose
UniProt	P01590
Localization	Cell surface, Cytoplasmic
Applications	Immunohistochemistry (FFPE) : 2-5ug/ml Immunofluorescence : 5ug/ml Direct ELISA : 0.1-0.5ug/ml
Limitations	This Il2r alpha antibody is available for research use only.



Immunofluorescent staining of FFPE mouse RAW264.7 cells with Il2r alpha antibody (green) and DAPI nuclear stain (blue). HIER: steam section in pH6 citrate buffer for 20 min.



IHC staining of FFPE mouse thymus tissue with IL2r alpha antibody. HIER: boil tissue sections in pH8 EDTA for 20 min and allow to cool before testing.



IHC staining of FFPE rat thymus tissue with IL2r alpha antibody. HIER: boil tissue sections in pH8 EDTA for 20 min and allow to cool before testing.

Description

IL2RA (Interleukin 2 receptor, alpha), also called IL2R, IL2R, Alpha Chain or CD25, is a protein that in humans is encoded by the IL2RA gene. The IL2RA gene is mapped on 10p15.1. IL2RA is composed of strand-swapped sushi-like domains, unlike the classical cytokine receptor fold. As a result of this domain swap, IL2RA uses a composite surface to dock into a groove on IL2 that also serves as a binding site for antagonist drugs. Homodimeric alpha chains (IL2RA) result in low-affinity receptor, while homodimeric beta(IL2RB) chains produce a medium-affinity receptor. Normally an integral-membrane protein, soluble IL2RA has been isolated and determined to result from extracellular proteolysis. Infection by the protozoan *Trypanosoma cruzi* causes Chagas disease, characterized by a reduction in the amount of IL2RA expressed on the surface of immune cells. This leads to chronic immune suppression, becoming increasingly severe over the course of many years and ultimately resulting in death if left untreated.

Application Notes

Optimal dilution of the IL2r alpha antibody should be determined by the researcher.

Immunogen

Recombinant mouse protein (amino acids E22-I268) was used as the immunogen for the IL2r alpha antibody.

Storage

After reconstitution, the IL2r alpha antibody can be stored for up to one month at 4°C. For long-term, aliquot and store at -20°C. Avoid repeated freezing and thawing.