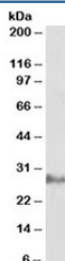


## IL22 Antibody (R33818)

Catalog No.	Formulation	Size
R33818-100UG	0.5 mg/ml in 1X TBS, pH7.3, with 0.5% BSA (US sourced) and 0.02% sodium azide	100 ug

### Bulk quote request

Availability	1-3 business days
Species Reactivity	Human
Format	Antigen affinity purified
Host	Goat
Clonality	Polyclonal (goat origin)
Isotype	Goat Ig
Purity	Antigen affinity
Gene ID	53342
Localization	Secreted
Applications	Western Blot : 0.3-1ug/ml ELISA (peptide) LOD : 1:128000
Limitations	This IL22 antibody is available for research use only.



Western blot testing of human adipose lysate with IL22 antibody at 0.3ug/ml. Observed molecular weight: 19~25kDa depending on glycosylation level.

## Description

Additional name(s) for this target protein: Interleukin-17D, interleukin-27

## Application Notes

Optimal dilution of the IL22 antibody should be determined by the researcher.

## Immunogen

Amino acids EKDADSINSSIDK were used as the immunogen for this IL22 antibody.

## Storage

Aliquot and store the IL22 antibody at -20oC.