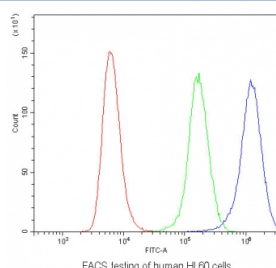


IL22 Antibody [clone 7F2] (RQ4626)

Catalog No.	Formulation	Size
RQ4626	0.5mg/ml if reconstituted with 0.2ml sterile DI water	100 ug

Bulk quote request

Availability	1-3 business days
Species Reactivity	Human
Format	Purified
Clonality	Monoclonal (mouse origin)
Isotype	Mouse IgG1
Clone Name	7F2
Purity	Protein G affinity
Buffer	Lyophilized from 1X PBS with 2% Trehalose and 0.025% sodium azide
UniProt	Q9GZX6
Applications	Flow Cytometry : 1-3ug/10 ⁶ cells



Flow cytometry testing of human HL60 cells with IL22 antibody at 1ug/10⁶ cells (blocked with goat sera); Red=cells alone, Green=isotype control, Blue= IL22 antibody.

Description

Interleukin-22 (IL-22), also known as ILTIF, is protein that in humans is encoded by the IL22 gene. IL-22 a member of a group of cytokines called the IL-10 family or IL-10 superfamily, a class of potent mediators of cellular inflammatory responses. Using FISH, the IL22 gene is mapped to chromosome 12q15, close to the IFNG and the herpesvirus saimiri-induced AK155 genes. IL-22 can contribute to immune disease through the stimulation of inflammatory responses, S100s and defensins. It also promotes hepatocyte survival in the liver and epithelial cells in the lung and gut similar to IL-10. In some contexts, the pro-inflammatory versus tissue-protective functions of IL-22 are regulated by the often co-expressed cytokine IL-17A.

Application Notes

Optimal dilution of the IL22 antibody should be determined by the researcher.

Immunogen

Amino acids A34-I179 from the human protein were used as the immunogen for the IL22 antibody.

Storage

After reconstitution, the IL22 antibody can be stored for up to one month at 4°C. For long-term, aliquot and store at -20°C. Avoid repeated freezing and thawing.