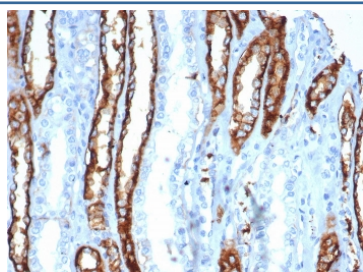


IL20RA Antibody / IL-20 receptor subunit alpha [clone IL20RA/0001] (V5185)

Catalog No.	Formulation	Size
V5185-100UG	0.2 mg/ml in 1X PBS with 0.1 mg/ml BSA (US sourced), 0.05% sodium azide	100 ug
V5185-20UG	0.2 mg/ml in 1X PBS with 0.1 mg/ml BSA (US sourced), 0.05% sodium azide	20 ug
V5185SAF-100UG	1 mg/ml in 1X PBS; BSA free, sodium azide free	100 ug

Bulk quote request

Availability	1-3 business days
Species Reactivity	Human
Format	Purified
Clonality	Monoclonal (mouse origin)
Isotype	Mouse IgG2, kappa
Clone Name	IL20RA/0001
Purity	Protein A/G affinity
UniProt	Q9UHF4
Localization	Cell surface
Applications	Immunohistochemistry (FFPE) : 1-2ug/ml for 30 min at RT
Limitations	This IL20RA antibody is available for research use only.



IHC staining of FFPE human kidney tissue with IL20RA antibody (clone IL20RA/0001).
 HIER: boil tissue sections in pH 9 10mM Tris with 1mM EDTA for 20 min and allow to cool before testing.

Description

The class II cytokine receptor family includes 12 members, 11 of which combine as various heterodimers to transduce signals across the cellular membrane for 27 cytokines. These cytokines are divided into four structurally related groups: six cytokines of the IL-10 family, 17 type I IFNs, one type II IFN and three IFN- γ . IL-20 is a member of the IL-10 family of cytokines that has been shown to be upregulated in psoriatic skin. The receptor for IL-20 (IL-20R) exists as a dimer

consisting of IL-20Ra and IL-20Rb. IL-20R also functions as a receptor for IL-19, IL-24 and IL-26. It is highly expressed in skin, brain and testis. IL-20, IL-20Ra and IL-20Rb all have higher expression levels in psoriatic lesional (LS) skin than in nonlesional (NL) skin, suggesting a role for these proteins as potential therapeutic targets. IL-20 can induce signal transducer and activator of transcription (Stat) activation through IL-20R.

Application Notes

Optimal dilution of the IL20RA antibody should be determined by the researcher.

Immunogen

A recombinant partial protein sequence (within amino acids 1-200) from the human protein was used as the immunogen for the IL20RA antibody.

Storage

Aliquot the IL20RA antibody and store frozen at -20oC or colder. Avoid repeated freeze-thaw cycles.