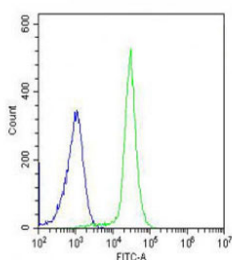


IL1RL2 Antibody / Interleukin-1 receptor-like 2 (F55129)

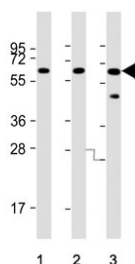
Catalog No.	Formulation	Size
F55129-0.4ML	In 1X PBS, pH 7.4, with 0.09% sodium azide	0.4 ml
F55129-0.08ML	In 1X PBS, pH 7.4, with 0.09% sodium azide	0.08 ml

Bulk quote request

Availability	1-2 business days
Species Reactivity	Human
Format	Antigen affinity purified
Clonality	Polyclonal (rabbit origin)
Isotype	Rabbit Ig
Purity	Antigen affinity
UniProt	Q9HB29
Applications	Western Blot : 1:2000-1:4000 Flow Cytometry : 1:25 per million cells in 0.1 ml
Limitations	This IL1RL2 antibody is available for research use only.



Flow cytometry testing of fixed human K562 cells with IL1RL2 antibody; Blue=isotype control, Green= IL1RL2 antibody.



Western blot testing of human 1) HL60, 2) U-87 MG and 3) K562 cell lysate with IL1RL2 antibody. Predicted molecular weight ~65 kDa.

Description

IL1RL2, also known as interleukin-1 receptor-like 2, is a protein that belongs to the IL-1 receptor family. It is primarily expressed on the surface of immune cells, where it binds to specific ligands and triggers a cascade of signaling pathways that ultimately lead to the activation of immune responses. Studies have shown that IL1RL2 plays a critical role in the pathogenesis of various inflammatory diseases, such as asthma, rheumatoid arthritis, and inflammatory bowel disease. One of the key functions of IL1RL2 is its ability to regulate the production of pro-inflammatory cytokines, such as IL-6 and IL-8, which are responsible for promoting inflammation in the body. By modulating the activity of these cytokines, IL1RL2 helps to maintain the balance between pro-inflammatory and anti-inflammatory responses, thereby preventing excessive inflammation and tissue damage. Furthermore, IL1RL2 has also been shown to play a role in the activation of T cells and other immune cells, which are essential for mounting an effective immune response against pathogens.

Application Notes

The stated application concentrations are suggested starting amounts. Titration of the IL1RL2 antibody may be required due to differences in protocols and secondary/substrate sensitivity.

Immunogen

A portion of amino acids 257-286 from the human protein was used as the immunogen for this IL1RL2 antibody.

Storage

Store at 4°C for up to one month. For long term, aliquot the IL1RL2 antibody and store frozen at -20°C or colder. Avoid repeated freeze-thaw cycles.