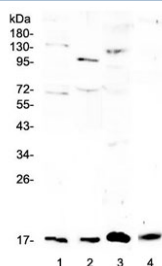


Il1f10 Antibody / Il-38 (RQ4150)

Catalog No.	Formulation	Size
RQ4150	0.5mg/ml if reconstituted with 0.2ml sterile DI water	100 ug

Bulk quote request

Availability	1-3 business days
Species Reactivity	Mouse, Rat
Format	Antigen affinity purified
Clonality	Polyclonal (rabbit origin)
Isotype	Rabbit IgG
Purity	Antigen affinity purified
Buffer	Lyophilized from 1X PBS with 2% Trehalose and 0.025% sodium azide
UniProt	D4A9I5
Applications	Western Blot : 0.5-1ug/ml Direct ELISA : 0.1-0.5ug/ml
Limitations	This Il1f10 antibody is available for research use only.



Western blot testing of 1) rat brain, 2) rat lung, 3) rat RH35 and 4) mouse lung lysate with Il1f10 antibody at 0.5ug/ml. Predicted molecular weight ~17 kDa.

Description

Interleukin-1 family member 10 is a protein that in humans is encoded by the IL1F10 gene. The protein encoded by this gene is a member of the interleukin 1 cytokine family. This gene and eight other interleukin 1 family genes form a cytokine gene cluster on chromosome 2. This cytokine is thought to participate in a network of interleukin 1 family members to regulate adapted and innate immune responses.

Application Notes

Optimal dilution of the Il1f10 antibody should be determined by the researcher.

Immunogen

A recombinant rat partial protein corresponding to amino acids M1-R152 was used as the immunogen for the Il1f10 antibody.

Storage

After reconstitution, the Il1f10 antibody can be stored for up to one month at 4oC. For long-term, aliquot and store at -20oC. Avoid repeated freezing and thawing.