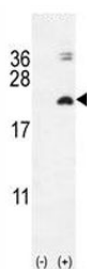


IL17F Antibody / Interleukin 17F (F41072)

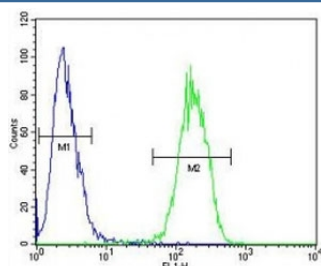
Catalog No.	Formulation	Size
F41072-0.4ML	In 1X PBS, pH 7.4, with 0.09% sodium azide	0.4 ml
F41072-0.08ML	In 1X PBS, pH 7.4, with 0.09% sodium azide	0.08 ml

[Bulk quote request](#)

Availability	1-3 business days
Species Reactivity	Human
Format	Antigen affinity purified
Host	Rabbit
Clonality	Polyclonal (rabbit origin)
Isotype	Rabbit Ig
Purity	Antigen affinity
UniProt	Q96PD4
Applications	Western Blot : 1:1000 Flow Cytometry : 1:10-1:50
Limitations	This IL17F antibody is available for research use only.



Western blot analysis of IL17F antibody and 293 cell lysate (2 ug/lane) either nontransfected (Lane 1) or transiently transfected with the IL17F gene (2).



IL17F antibody flow cytometric analysis of 293 cells (right histogram) compared to a negative control (left histogram). FITC-conjugated goat-anti-rabbit secondary Ab was used for the analysis.

Description

The protein encoded by this gene is a cytokine that shares sequence similarity with IL17. This cytokine is expressed by activated T cells, and has been shown to stimulate the production of several other cytokines, including IL6, IL8, and CSF2/GM-CSF. This cytokine is also found to inhibit the angiogenesis of endothelial cells and induce endothelial cells to produce IL2, TGFB1/TGFB, and monocyte chemoattractant protein-1. [provided by RefSeq].

Application Notes

Titration of the IL17F antibody may be required due to differences in protocols and secondary/substrate sensitivity.

Immunogen

A portion of amino acids 16-45 from the human protein was used as the immunogen for this IL17F antibody.

Storage

Aliquot the IL17F antibody and store frozen at -20oC or colder. Avoid repeated freeze-thaw cycles.