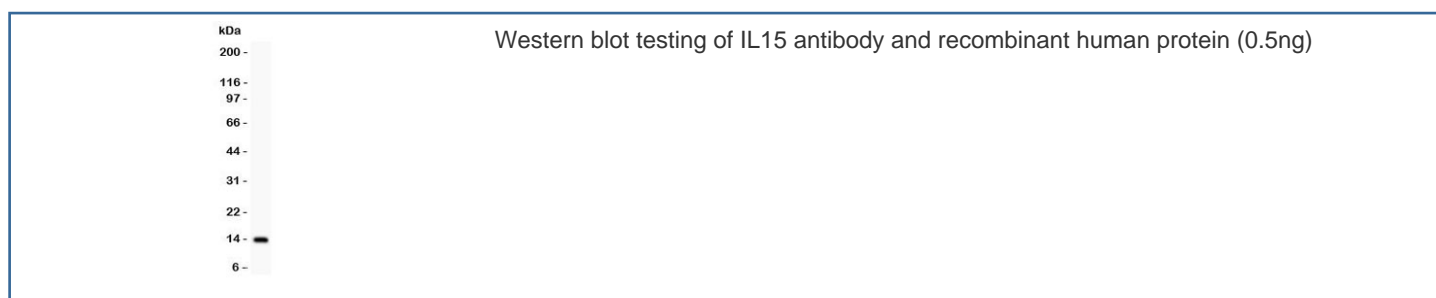


IL15 Antibody (R31657)

Catalog No.	Formulation	Size
R31657	0.5mg/ml if reconstituted with 0.2ml sterile DI water	100 ug

Bulk quote request

Availability	1-3 business days
Species Reactivity	Human
Format	Antigen affinity purified
Clonality	Polyclonal (rabbit origin)
Isotype	Rabbit IgG
Purity	Antigen affinity
Buffer	Lyophilized from 1X PBS with 2.5% BSA and 0.025% sodium azide
Gene ID	3600
Applications	Western Blot : 0.5-1ug/ml ELISA : 0.1-0.5ug/ml (human protein tested); request BSA free format for coating
Limitations	This IL15 antibody is available for research use only.



Description

Interleukin 15 is a cytokine with the ability to stimulate the proliferation activity of Th1 and/or Th2 lymphocytes. This gene is mapped to human chromosome 4q31 by fluorescence in situ hybridization. IL15 is a novel cytokine whose effects on T-cell activation and proliferation are similar to those of interleukin-2 (IL-2), presumably because IL15 utilizes the beta and gamma chains of the IL-2 receptor. It can play a role in the initiation and outcome of acute and chronic rejection. Anti-IL-15 therapy in combination with classic immunosuppression therapy might be beneficial in the prevention of acute, and especially chronic, allograft rejection.

Application Notes

The stated application concentrations are suggested starting amounts. Titration of the IL15 antibody may be required due to differences in protocols and secondary/substrate sensitivity.

Immunogen

Human partial recombinant protein (AA 49-162) was used as the immunogen for this IL15 antibody.

Storage

After reconstitution, the IL15 antibody can be stored for up to one month at 4°C. For long-term, aliquot and store at -20°C. Avoid repeated freezing and thawing.