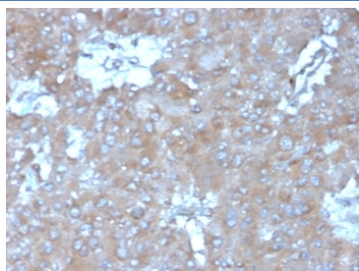


IL15 Antibody [clone IL15/4355] (V8781)

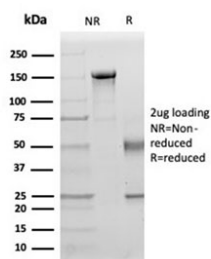
| Catalog No. | Formulation | Size |
|----------------|--|--------|
| V8781-100UG | 0.2 mg/ml in 1X PBS with 0.1 mg/ml BSA (US sourced), 0.05% sodium azide | 100 ug |
| V8781-20UG | 0.2 mg/ml in 1X PBS with 0.1 mg/ml BSA (US sourced) and 0.05% sodium azide | 20 ug |
| V8781SAF-100UG | 1 mg/ml in 1X PBS; BSA free, sodium azide free | 100 ug |

Bulk quote request

| | |
|--------------------|--|
| Availability | 1-3 business days |
| Species Reactivity | Human |
| Format | Purified |
| Host | Mouse |
| Clonality | Monoclonal (mouse origin) |
| Isotype | Mouse IgG2b, kappa |
| Clone Name | IL15/4355 |
| Purity | Protein A/G affinity |
| UniProt | IDP40933 |
| Localization | Secreted, Cytoplasm, Nucleus |
| Applications | Immunohistochemistry (FFPE) : 1-2ug/ml |
| Limitations | This IL15 antibody is available for research use only. |

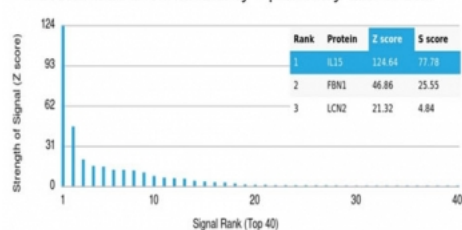


IHC staining of FFPE human adrenal gland tissue with IL15 antibody (clone IL15/4355).
HIER: boil tissue sections in pH 9 10mM Tris with 1mM EDTA for 20 min and allow to cool before testing.



SDS-PAGE analysis of purified, BSA-free IL15 antibody (IL15/4355) as confirmation of integrity and purity.

Human Protein Microarray Specificity Validation



Analysis of HuProt(TM) microarray containing more than 19,000 full-length human proteins using IL15 antibody (clone IL15/4355). These results demonstrate the foremost specificity of the IL15/4355 mAb. Z- and S- score: The Z-score represents the strength of a signal that an antibody (in combination with a fluorescently-tagged anti-IgG secondary Ab) produces when binding to a particular protein on the HuProt(TM) array. Z-scores are described in units of standard deviations (SD's) above the mean value of all signals generated on that array. If the targets on the HuProt(TM) are arranged in descending order of the Z-score, the S-score is the difference (also in units of SD's) between the Z-scores. The S-score therefore represents the relative target specificity of an Ab to its intended target.

Description

Interleukin-15 (IL-15), also designated IL-T, is a cloned cytokine which shares several biological activities but no sequence homology with IL-2. The precursor protein contains a 48 amino acid leader that is cleaved to generate the mature form of IL-15. IL-15 stimulates the proliferation of T cells and NK cells, while enhancing B cell expansion and antibody production.

Application Notes

Optimal dilution of the IL15 antibody should be determined by the researcher.

Immunogen

A recombinant protein fragment was used as the immunogen for the IL15 antibody.

Storage

Aliquot the IL15 antibody and store frozen at -20oC or colder. Avoid repeated freeze-thaw cycles.