

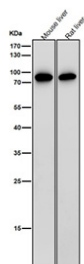
## IL12B Antibody / Interleukin 12 beta / IL12 p40 [clone 31I13] (FY12663)

Catalog No.	Formulation	Size
FY12663	Rabbit IgG in phosphate buffered saline, pH 7.4, 150mM NaCl, 0.02% sodium azide and 50% glycerol, 0.4-0.5mg/ml BSA	100 ul

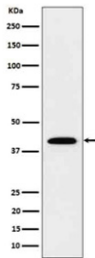
Recombinant **RABBIT MONOCLONAL**

[Bulk quote request](#)

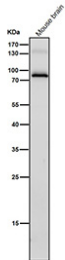
Availability	2-3 weeks
Species Reactivity	Human
Format	Liquid
Clonality	Recombinant Rabbit Monoclonal
Isotype	Rabbit IgG
Clone Name	31I13
Purity	Affinity-chromatography
Buffer	Rabbit IgG in phosphate buffered saline, pH 7.4, 150mM NaCl, 0.02% sodium azide and 50% glycerol, 0.4-0.5mg/ml BSA.
UniProt	P29460
Applications	Western Blot : 1:500-1:2000 Immunocytochemistry/Immunofluorescence : 1:50-1:200 Flow Cytometry : 1:50
Limitations	This IL12B antibody is available for research use only.



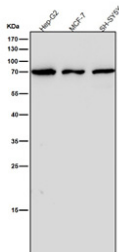
All lanes use the antibody at 1:2000 dilution for 1 hour at room temperature. Western blot analysis of IL12B using anti-IL12B antibody. A strong band is observed at ~75-80 kDa, corresponding to the disulfide-linked homodimer, consistent with reports that the subunit forms stable dimers that migrate above the predicted 37 kDa monomeric size.



Western blot analysis of IL12B in recombinant human IL12B protein cell lysate. Expected molecular weight ~37-40 kDa.



All lanes use the antibody at 1:2000 dilution for 1 hour at room temperature. Western blot analysis of IL12B using anti-IL12B antibody. A strong band is observed at ~75-80 kDa, corresponding to the disulfide-linked homodimer, consistent with reports that the subunit forms stable dimers that migrate above the predicted 37 kDa monomeric size.



All lanes use the antibody at 1:2000 dilution for 1 hour at room temperature. Western blot analysis of IL12B using anti-IL12B antibody. A strong band is observed at ~75-80 kDa, corresponding to the disulfide-linked homodimer, consistent with reports that the subunit forms stable dimers that migrate above the predicted 37 kDa monomeric size.

## Description

IL12B antibody detects interleukin 12 subunit beta, encoded by the IL12B gene. IL12B forms part of two heterodimeric cytokines, interleukin 12 and interleukin 23. In interleukin 12, IL12B pairs with the IL12A subunit to promote Th1 differentiation and interferon gamma production, supporting cellular immunity against intracellular pathogens. In interleukin 23, IL12B pairs with IL23A to stimulate Th17 responses and production of IL17, driving neutrophilic inflammation. Through these dual roles, IL12B is central to both protective immunity and inflammatory disease.

IL12B antibody is widely applied in immunology, inflammation, and translational medicine. By detecting IL12B, researchers can examine how immune signaling shapes host defense and pathology. Elevated IL12B expression contributes to autoimmune diseases such as psoriasis, Crohn disease, and multiple sclerosis. Conversely, defective IL12B leads to increased susceptibility to infection due to impaired Th1 responses.

ELISA quantifies IL12B in serum or culture supernatants. Western blot assays detect IL12B protein bands in activated immune cell lysates. Immunohistochemistry maps expression in lymphoid tissues, while immunofluorescence highlights secretion patterns in dendritic cells and macrophages. These diverse applications make IL12B antibody a versatile tool for immune research.

IL12B has therapeutic relevance as a target of monoclonal antibodies that block interleukin 12 and interleukin 23 signaling. Agents such as ustekinumab neutralize IL12B and provide clinical benefit in psoriasis and inflammatory bowel disease. By applying IL12B antibody, scientists can evaluate pathway activity and therapeutic responses in autoimmune and inflammatory disorders.

IL12B antibody from NSJ Bioreagents delivers strong specificity for analyzing cytokine biology. Its performance across multiple methods supports research into immune signaling and translational medicine.

## Application Notes

Optimal dilution of the IL12B antibody should be determined by the researcher.

## Immunogen

A synthesized peptide derived from human IL12B was used as the immunogen for the IL12B antibody.

## Storage

Store the IL12B antibody at -20oC.