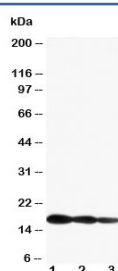


## IL1 beta Antibody (R30418)

Catalog No.	Formulation	Size
R30418	0.5mg/ml if reconstituted with 0.2ml sterile DI water	100 ug

**Bulk quote request**

<b>Availability</b>	1-3 business days
<b>Species Reactivity</b>	Mouse, Rat
<b>Format</b>	Antigen affinity purified
<b>Clonality</b>	Polyclonal (rabbit origin)
<b>Isotype</b>	Rabbit IgG
<b>Purity</b>	Antigen affinity
<b>Buffer</b>	Lyophilized from 1X PBS with 2% Trehalose
<b>UniProt</b>	P10749
<b>Applications</b>	Western Blot : 0.5-1ug/ml
<b>Limitations</b>	This IL1 beta antibody is available for research use only.



Western blot testing of IL1 beta antibody and Lane 1: Recombinant mouse IL1b partial protein 10ng; 2: 5ng; 3: 2.5ng

## Description

Interleukin-1 beta(IL-1beta) also known as catabolin, is a cytokine protein that in humans is encoded by the IL1B gene, which localizes to the long arm of chromosome at position 2q13-2q21 between two fragile sites. Interleukin 1(IL-1) is a protein with several biological activities regulating host defense and immune responses.<sup>2</sup> The human IL-1 family plays an important role in the pathogenesis of many diseases and functions as a key mediator of the host response to various infectious, inflammatory, and immunologic challenges.

## Application Notes

The stated application concentrations are suggested starting amounts. Titration of the IL1 beta antibody may be required

due to differences in protocols and secondary/substrate sensitivity.

## Immunogen

An amino acid sequence from the C-terminus of mouse IL1 beta (FLGNNSGQDIIDFTME) was used as the immunogen for this IL1 beta antibody.

## Storage

After reconstitution, the IL1 beta antibody can be stored for up to one month at 4oC. For long-term, aliquot and store at -20oC. Avoid repeated freezing and thawing.