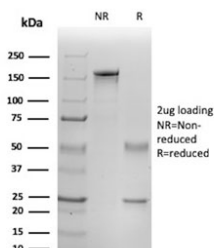


IL1 beta Antibody / IL1B [clone IL1B/465] (V9632)

Catalog No.	Formulation	Size
V9632-100UG	0.2 mg/ml in 1X PBS with 0.1 mg/ml BSA (US sourced), 0.05% sodium azide	100 ug
V9632-20UG	0.2 mg/ml in 1X PBS with 0.1 mg/ml BSA (US sourced), 0.05% sodium azide	20 ug
V9632SAF-100UG	1 mg/ml in 1X PBS; BSA free, sodium azide free	100 ug

[Bulk quote request](#)

Availability	1-3 business days
Species Reactivity	Human
Format	Purified
Clonality	Monoclonal (mouse origin)
Isotype	Mouse IgG2b, kappa
Clone Name	IL1B/465
Purity	Protein A/G affinity
UniProt	P01584
Localization	Cytoplasm, Extracellular (secreted)
Applications	ELISA (order BSA-free Format For Coating) :
Limitations	This IL1B antibody is available for research use only.



SDS-PAGE analysis of purified, BSA-free IL1B antibody (clone IL1B/465) as confirmation of integrity and purity.

Description

This cytokine is produced by activated macrophages as a proprotein, which is proteolytically processed to its active form by caspase 1 (CASP1/ICE). This cytokine is an important mediator of the inflammatory response, and is involved in a variety of cellular activities, including cell proliferation, differentiation, and apoptosis. The induction of cyclooxygenase-2 (PTGS2/COX2) by this cytokine in the central nervous system (CNS) is found to contribute to inflammatory pain

hypersensitivity. This gene and eight other interleukin 1 family genes form a cytokine gene cluster on chromosome 2.

Application Notes

Optimal dilution of the IL1B antibody should be determined by the researcher.

Immunogen

Recombinant full-length human IL1B protein was used as the immunogen for the IL1B antibody.

Storage

Aliquot the IL1B antibody and store frozen at -20oC or colder. Avoid repeated freeze-thaw cycles.