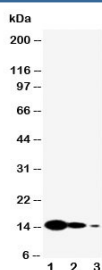


IL-7 Antibody (R30539)

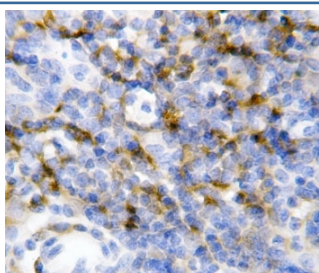
Catalog No.	Formulation	Size
R30539	0.5mg/ml if reconstituted with 0.2ml sterile DI water	100 ug

Bulk quote request

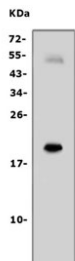
Availability	1-3 business days
Species Reactivity	Mouse, Human
Format	Antigen affinity purified
Clonality	Polyclonal (rabbit origin)
Isotype	Rabbit IgG
Purity	Antigen affinity
Buffer	Lyophilized from 1X PBS with 2.5% BSA and 0.025% sodium azide/thimerosal
UniProt	P10168
Applications	Western Blot : 0.5-1ug/ml Immunohistochemistry (FFPE) : 0.5-1ug/ml
Limitations	This IL-7 antibody is available for research use only.



Western blot testing of IL-7 antibody and Lane 1: recombinant mouse protein 10ng; 2. 5ng; 3: 2.5ng.



IHC-P: IL-7 antibody testing of mouse spleen tissue.



Western blot testing of human PC-3 cell lysate with IL-7 antibody.

Description

Interleukin 7, is a protein that in humans is encoded by the IL-7 gene. It is a hematopoietic growth factor secreted by stromal cells in the red marrow and thymus. It is also produced by keratinocytes, dendritic cells, hepatocytes, neurons, and epithelial cells but is not produced by lymphocytes. By the combination of approaches, IL-7 is located on 8q12-q13. It is critical for early T-cell development and homeostasis of naive and memory CD8-positive T cells. It signals through the IL-7R complex, which consists of the IL7R-alpha chain and the common IL2R-gamma chain and is critical for early T-cell development and homeostasis of naive and memory CD8 -positive T cells.

Application Notes

The stated application concentrations are suggested starting amounts. Titration of the IL-7 antibody may be required due to differences in protocols and secondary/substrate sensitivity.

Immunogen

An amino acid sequence from the N-terminus of mouse IL-7 (ECHIKDKEGKAYESVLM) was used as the immunogen for this IL-7 antibody.

Storage

After reconstitution, the IL-7 antibody can be stored for up to one month at 4oC. For long-term, aliquot and store at -20oC. Avoid repeated freezing and thawing.