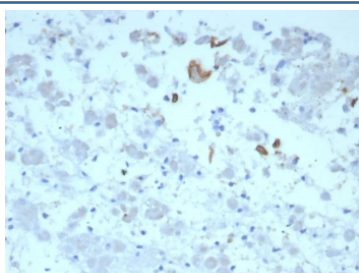


IL-6 Antibody / Interleukin 6 [clone IL6/8713] (V5432)

Catalog No.	Formulation	Size
V5432-100UG	0.2 mg/ml in 1X PBS with 0.1 mg/ml BSA (US sourced), 0.05% sodium azide	100 ug
V5432-20UG	0.2 mg/ml in 1X PBS with 0.1 mg/ml BSA (US sourced), 0.05% sodium azide	20 ug
V5432SAF-100UG	1 mg/ml in 1X PBS; BSA free, sodium azide free	100 ug

[Bulk quote request](#)

Availability	1-3 business days
Species Reactivity	Human
Format	Purified
Host	Mouse
Clonality	Monoclonal (mouse origin)
Isotype	Mouse IgM, kappa
Clone Name	IL6/8713
Purity	Protein A/G affinity
UniProt	P05231
Localization	Cytoplasm, Extracellular (Secreted)
Applications	Immunohistochemistry (FFPE) : 1-2ug/ml
Limitations	This IL-6 antibody is available for research use only.



IHC staining of FFPE human adrenal gland tissue with IL-6 antibody (clone IL6/8713).
HIER: boil tissue sections in pH 9 10mM Tris with 1mM EDTA for 20 min and allow to cool before testing.

Description

IL-6 is a potent lymphoid cell growth factor that stimulates the growth and survivability of certain B-cells and T-cells. It plays a critical role in B-cell differentiation to plasma cells and is a potent growth factor for plasmacytoma and myeloma.

IL-6 is produced by a variety of cell types, including monocytes, fibroblasts and endothelial cells. Upon stimulation, macrophages, T, B, mast, and glial cells, eosinophils, keratinocytes and granulocytes also secrete IL-6. It is involved in host defense, acute phase reactions, immune responses, and hematopoiesis.

Application Notes

Optimal dilution of the IL-6 antibody should be determined by the researcher.

Immunogen

A recombinant fragment (within amino acids 1-200) of human IL-6 protein was used as the immunogen for the IL-6 antibody.

Storage

Aliquot the IL-6 antibody and store frozen at -20°C or colder. Avoid repeated freeze-thaw cycles.