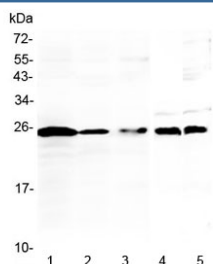


## IL-36 alpha Antibody / IL-1F6 (R32986)

Catalog No.	Formulation	Size
R32986	0.5mg/ml if reconstituted with 0.2ml sterile DI water	100 ug

**Bulk quote request**

<b>Availability</b>	1-3 business days
<b>Species Reactivity</b>	Human, Mouse, Rat
<b>Format</b>	Antigen affinity purified
<b>Clonality</b>	Polyclonal (rabbit origin)
<b>Isotype</b>	Rabbit IgG
<b>Purity</b>	Antigen affinity
<b>Buffer</b>	Lyophilized from 1X PBS with 2.5% BSA, 0.025% sodium azide
<b>UniProt</b>	Q9UHA7
<b>Applications</b>	Western Blot : 0.5-1ug/ml Direct ELISA (recombinant Human Protein) : 0.1-0.5ug/ml (BSA-free format available)
<b>Limitations</b>	This IL-36 alpha antibody is available for research use only.



Western blot testing of 1) human Jurkat, 2) human K562, 3) human Raji, 4) rat thymus and 5) mouse thymus lysate with IL-36 alpha antibody at 0.5ug/ml. Predicted molecular weight ~17 kDa, routinely observed at 18-22 kDa.

## Description

Interleukin-36 alpha also known as interleukin-1 family member 6 (IL1F6) is a protein that in humans is encoded by the IL36A gene. The protein encoded by this gene is a cytokine that can activate NF-kappa-B and MAPK signaling pathways to generate an inflammatory response. The encoded protein functions primarily in skin and demonstrates increased expression in psoriasis. In addition, decreased expression of this gene has been linked to a poor prognosis in both hepatocellular carcinoma and colorectal cancer patients.

## Application Notes

Optimal dilution of the IL-36 alpha antibody should be determined by the researcher.

## **Immunogen**

A recombinant human protein corresponding to amino acids K6-F158 was used as the immunogen for the IL-36 alpha antibody.

## **Storage**

After reconstitution, the IL-36 alpha antibody can be stored for up to one month at 4oC. For long-term, aliquot and store at -20oC. Avoid repeated freezing and thawing.