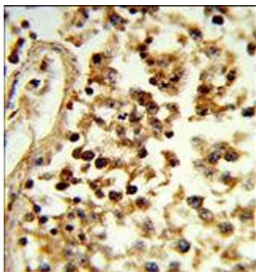


## IL-31 Antibody / Interleukin 31 (F55110)

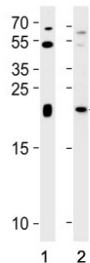
Catalog No.	Formulation	Size
F55110-0.4ML	In 1X PBS, pH 7.4, with 0.09% sodium azide	0.4 ml
F55110-0.08ML	In 1X PBS, pH 7.4, with 0.09% sodium azide	0.08 ml

[Bulk quote request](#)

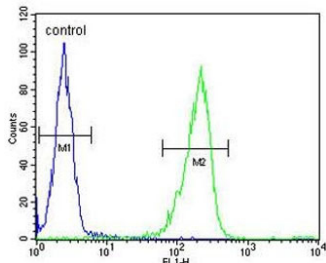
<b>Availability</b>	1-2 business days
<b>Species Reactivity</b>	Human
<b>Format</b>	Purified
<b>Host</b>	Rabbit
<b>Clonality</b>	Polyclonal (rabbit origin)
<b>Isotype</b>	Rabbit Ig
<b>Purity</b>	Antigen affinity
<b>UniProt</b>	Q6EBC2
<b>Localization</b>	Secreted
<b>Applications</b>	Western Blot : 1:500-1:1000 Immunohistochemistry (FFPE) : 1:50-1:100 Flow Cytometry : 1:10-1:50 per million cells in 0.1ml
<b>Limitations</b>	This IL-31 antibody is available for research use only.



IHC staining of FFPE human testis tissue with IL-31 antibody. HIER: steam section in pH6 citrate buffer for 20 min and allow to cool prior to staining.



Western blot testing of human 1) K562 and 2) placenta tissue lysate with IL-31 antibody.  
Predicted molecular weight ~18 kDa.



Flow cytometry testing of human WiDr cells with IL-31 antibody; Blue=isotype control, Green= IL-31 antibody.

## Description

Interleukin 31 (IL-31) is a cytokine that plays a critical role in inflammatory responses and allergic reactions in the body. IL-31 is produced by T-helper 2 (Th2) cells, which are involved in the body's response to allergens and parasites. When released, IL-31 binds to receptors on various cells in the body, triggering a cascade of inflammatory responses that can lead to symptoms such as itching, redness, and swelling. Studies have shown that IL-31 is particularly important in the development of atopic dermatitis, a common skin condition characterized by itchy, inflamed skin. In individuals with atopic dermatitis, levels of IL-31 are often elevated in the skin, leading to increased inflammation and itching. Additionally, IL-31 has also been implicated in other inflammatory conditions such as asthma and inflammatory bowel disease, highlighting its importance in the body's immune response.

## Application Notes

The stated application concentrations are suggested starting points. Titration of the IL-31 antibody may be required due to differences in protocols and secondary/substrate sensitivity.

## Immunogen

A portion of amino acids 13-40 from the human protein was used as the immunogen for the IL-31 antibody.

## Storage

Aliquot the IL-31 antibody and store frozen at -20oC or colder. Avoid repeated freeze-thaw cycles.