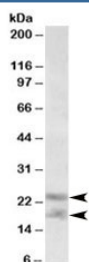


IL-25 Antibody / IL-17E (R35712)

Catalog No.	Formulation	Size
R35712-100UG	0.5 mg/ml in 1X TBS, pH7.3, with 0.5% BSA (US sourced) and 0.02% sodium azide	100 ug

[Bulk quote request](#)

Availability	1-3 business days
Species Reactivity	Human
Format	Antigen affinity purified
Host	Goat
Clonality	Polyclonal (goat origin)
Isotype	Goat Ig
Purity	Antigen affinity
Gene ID	64806
Applications	Western Blot : 0.3-1ug/ml ELISA (peptide) LOD : 1:128000
Limitations	This IL-25 antibody is available for research use only.



Western blot testing of human prostate lysate with IL-25 antibody at 0.3ug/ml. Predicted molecular weight: ~18 kDa (unmodified), 21-26 kDa (glycosylated).

Description

Additional name(s) for this target protein: Interleukin 25, IL25, IL-17E

Application Notes

Optimal dilution of the IL-25 antibody should be determined by the researcher.

Immunogen

Amino acids RPNRHPESCRASED were used as the immunogen for this IL-25 antibody.

Storage

Aliquot and store the IL-25 antibody at -20oC.