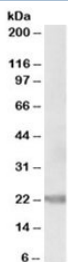


## IL-25 Antibody / IL-17E (R34185)

Catalog No.	Formulation	Size
R34185-100UG	0.5 mg/ml in 1X TBS, pH7.3, with 0.5% BSA (US sourced) and 0.02% sodium azide	100 ug

[Bulk quote request](#)

<b>Availability</b>	1-3 business days
<b>Species Reactivity</b>	Human
<b>Format</b>	Antigen affinity purified
<b>Host</b>	Goat
<b>Clonality</b>	Polyclonal (goat origin)
<b>Isotype</b>	Goat Ig
<b>Purity</b>	Antigen affinity
<b>Gene ID</b>	64806
<b>Applications</b>	Western Blot : 0.5-1.5ug/ml ELISA (peptide) LOD : 1:128000
<b>Limitations</b>	This IL-25 antibody is available for research use only.



Western blot testing of human prostate lysate with IL-25 antibody at 0.5ug/ml. Predicted molecular weight: ~18 kDa (unmodified), 21-26 kDa (glycosylated).

### Description

Additional name(s) for this target protein: IL-17E

### Application Notes

Optimal dilution of the IL-25 antibody should be determined by the researcher.

### Immunogen

Amino acids HGEKGTHTKGYCLER were used as the immunogen for this IL-25 antibody.

## **Storage**

Aliquot and store the IL-25 antibody at -20oC.