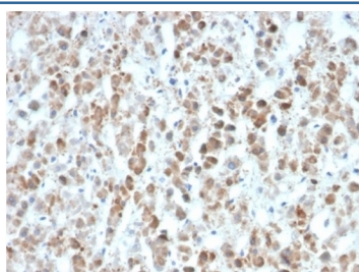


## IL-25 Antibody / IL-17E [clone IL25/625] (V9633)

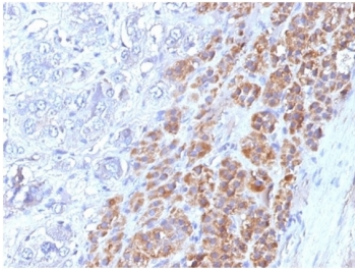
| Catalog No.    | Formulation   | Size   |
|----------------|---|--------|
| V9633-100UG    | 0.2 mg/ml in 1X PBS with 0.1 mg/ml BSA (US sourced), 0.05% sodium azide | 100 ug |
| V9633-20UG     | 0.2 mg/ml in 1X PBS with 0.1 mg/ml BSA (US sourced), 0.05% sodium azide | 20 ug  |
| V9633SAF-100UG | 1 mg/ml in 1X PBS; BSA free, sodium azide free                          | 100 ug |

[Bulk quote request](#)

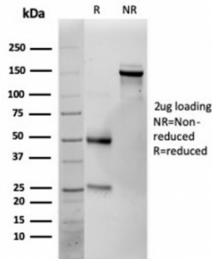
|                           |   |
|---------------------------|---|
| <b>Availability</b>       | 1-3 business days                                       |
| <b>Species Reactivity</b> | Human   |
| <b>Format</b>             | Purified  |
| <b>Clonality</b>          | Monoclonal (mouse origin)                               |
| <b>Isotype</b>            | Mouse IgG1, kappa                                       |
| <b>Clone Name</b>         | IL25/625  |
| <b>Purity</b>             | Protein A/G affinity                                    |
| <b>UniProt</b>            | Q9H293  |
| <b>Localization</b>       | Secreted  |
| <b>Applications</b>       | Immunohistochemistry (FFPE) : 1-2ug/ml                  |
| <b>Limitations</b>        | This IL-25 antibody is available for research use only. |



IHC staining of FFPE human colon carcinoma tissue with IL-25 antibody (clone IL25/625). HIER: boil tissue sections in pH 9 10mM Tris with 1mM EDTA for 20 min and allow to cool before testing.



IHC staining of FFPE human adrenal gland tissue with IL-25 antibody (clone IL25/625).  
HIER: boil tissue sections in pH 9 10mM Tris with 1mM EDTA for 20 min and allow to cool before testing.



SDS-PAGE analysis of purified, BSA-free IL-25 antibody (clone IL25/625) as confirmation of integrity and purity.

## Description

Cytokines are small, soluble proteins with pleiotropic effects on a variety of cell types. Cytokines have a regulatory function over the immune system and mediate aspects of inflammatory response. They exert their biological effects through the binding of membrane-bound receptors which, in turn, initiate signal transduction cascades and elicit physiological changes in their target cell. Interleukin-17 (IL-17) and its cognate receptor, IL-17R, are an example of such a cytokine receptor pair. Originally identified as a rodent cDNA termed CTLA8, IL-17 is capable of inducing the secretion of IL-6 and IL-8 and augmenting the expression of ICAM-1 in human fibroblast cultures. The IL-17 protein exhibits a striking degree of homology with the HSV-13 protein which mimics its function. The IL-17 receptor is a type I transmembrane protein 864 amino acids in length that is highly expressed in spleen and kidney.

## Application Notes

Optimal dilution of the IL-25 antibody should be determined by the researcher.

## Immunogen

A recombinant protein fragment was used as the immunogen for the IL-25 antibody.

## Storage

Aliquot the IL-25 antibody and store frozen at -20°C or colder. Avoid repeated freeze-thaw cycles.