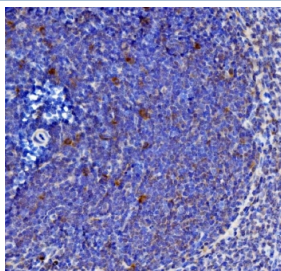


## Il-21 Antibody (RQ6191)

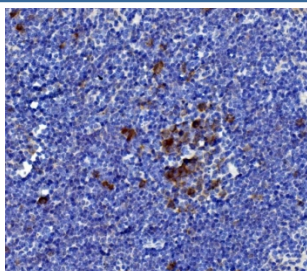
Catalog No.	Formulation	Size
RQ6191	0.5mg/ml if reconstituted with 0.2ml sterile DI water	100 ug

**Bulk quote request**

<b>Availability</b>	1-3 business days
<b>Species Reactivity</b>	Mouse, Rat
<b>Format</b>	Antigen affinity purified
<b>Clonality</b>	Polyclonal (rabbit origin)
<b>Isotype</b>	Rabbit IgG
<b>Purity</b>	Affinity purified
<b>Buffer</b>	Lyophilized from 1X PBS with 2% Trehalose and 0.0125% sodium azide
<b>UniProt</b>	Q9ES17
<b>Applications</b>	Immunohistochemistry (FFPE) : 2-5ug/ml Direct ELISA : 0.1-0.5ug/ml
<b>Limitations</b>	This Il-21 antibody is available for research use only.



IHC staining of FFPE rat spleen with Il-21 antibody. HIER: boil tissue sections in pH8 EDTA for 20 min and allow to cool before testing.



IHC staining of FFPE mouse spleen with Il-21 antibody. HIER: boil tissue sections in pH8 EDTA for 20 min and allow to cool before testing.

## Description

Interleukin 21 (IL-21) is a protein that in humans is encoded by the IL21 gene. This gene encodes a member of the common-gamma chain family of cytokines with immunoregulatory activity. The encoded protein plays a role in both the innate and adaptive immune responses by inducing the differentiation, proliferation and activity of multiple target cells including macrophages, natural killer cells, B cells and cytotoxic T cells. Dysregulation of this gene plays a role in multiple immune-mediated diseases including lupus, psoriasis and chronic inflammatory diseases. Alternatively spliced transcript variants encoding multiple isoforms have been observed for this gene.

## Application Notes

Optimal dilution of the IL-21 antibody should be determined by the researcher.

## Immunogen

A mouse recombinant partial protein (amino acids H18-S146) was used as the immunogen for the IL-21 antibody.

## Storage

After reconstitution, the IL-21 antibody can be stored for up to one month at 4°C. For long-term, aliquot and store at -20°C. Avoid repeated freezing and thawing.