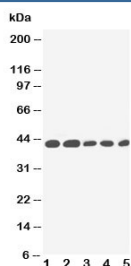


IL-2 Receptor Antibody (gamma subunit) (R30697)

Catalog No.	Formulation	Size
R30697	0.5mg/ml if reconstituted with 0.2ml sterile DI water	100 ug

[Bulk quote request](#)

Availability	1-3 business days
Species Reactivity	Human
Format	Antigen affinity purified
Host	Rabbit
Clonality	Polyclonal (rabbit origin)
Isotype	Rabbit IgG
Purity	Antigen affinity
Buffer	Lyophilized from 1X PBS with 2.5% BSA and 0.025% sodium azide/thimerosal
UniProt	P31785
Applications	Western Blot : 0.5-1ug/ml
Limitations	This IL-2 Receptor antibody is available for research use only.



Western blot testing of IL-2 Receptor antibody and Lane 1: PANC; 2: HeLa; 3: Jurkat; 4: Raji; 5: CEM cell lysate. Expected size: 42KD

Description

Interleukin 2 receptor gamma, also known as Common gamma chain or CD132, is a cytokine receptor subunit that is common to the receptor complexes for at least six different interleukin receptors: IL-2, IL-4, IL-7, IL-9, IL-15 and interleukin-21 receptor. IL2RG is a member of the type I cytokine receptor family expressed on most lymphocyte (white blood cell) populations, and its gene is found on the X-chromosome of mammals. By fluorescence in situ hybridization and PCR amplification of somatic cell hybrid DNAs, the IL2RG gene is mapped to Xq13.1. The IL2RG gene contains 8 exons and spans approximately 4.2 kb. And the gamma chain is an indispensable component of the functional IL-2 receptor. Lymphocytes expressing the common gamma chain can form functional receptors for these cytokine proteins,

which transmit signals from one cell to another and direct programs of cellular differentiation. The sharing of the gamma subunit by several receptors explains why humans and mice that lack IL-2 entirely show milder symptoms than those with IL2RG deficiency.

Application Notes

The stated application concentrations are suggested starting amounts. Titration of the IL-2 Receptor gamma antibody may be required due to differences in protocols and secondary/substrate sensitivity.

Immunogen

An amino acid sequence from the middle region of human IL-2 Receptor gamma subunit (HYWYKNSDNDKVQKC) was used as the immunogen for this IL-2 Receptor antibody.

Storage

After reconstitution, the IL-2 Receptor antibody can be stored for up to one month at 4oC. For long-term, aliquot and store at -20oC. Avoid repeated freezing and thawing.