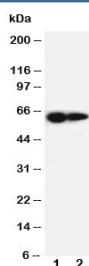


## IL-2 Receptor Antibody (beta subunit) (R30696)

Catalog No.	Formulation	Size
R30696	0.5mg/ml if reconstituted with 0.2ml sterile DI water	100 ug

**Bulk quote request**

<b>Availability</b>	1-3 business days
<b>Species Reactivity</b>	Human
<b>Format</b>	Antigen affinity purified
<b>Clonality</b>	Polyclonal (rabbit origin)
<b>Isotype</b>	Rabbit IgG
<b>Purity</b>	Antigen affinity
<b>Buffer</b>	Lyophilized from 1X PBS with 2.5% BSA and 0.025% sodium azide/thimerosal
<b>UniProt</b>	P14784
<b>Applications</b>	Western Blot : 0.5-1ug/ml
<b>Limitations</b>	This IL-2 Receptor antibody is available for research use only.



Western blot testing of IL-2 Receptor antibody and Lane 1: PANC cell lysate ; 2: HeLa cell lysate. Expected molecular weight ~61 kDa (unmodified), 70-75 kDa (glycosylated).

## Description

Interleukin 2 receptor beta, also called CD122, is a protein that in humans is encoded by the IL2RB gene. The gene represents the beta subunit and is a type I membrane protein. The IL2RB gene contains 10 exons spanning about 24.3 kb and that the gene product is encoded by exons 2-10. IL-2 receptor is present in three forms with respect to binding ability to IL-2: high, intermediate, and low affinity forms. Analysis of mutants of the beta chain of the IL-2 receptor reveals that the granulocyte and monocyte differentiation signals are triggered by different cytoplasmic domains, showing that the signaling pathways responsible for these unique developmental outcomes are separable.

## Application Notes

The stated application concentrations are suggested starting amounts. Titration of the IL-2 Receptor antibody may be required due to differences in protocols and secondary/substrate sensitivity.

## Immunogen

Amino acids 117-135 (RVMAIQDFKPFENLRMAP-human) of the beta subunit were used as the immunogen for this IL-2 Receptor antibody.

## Storage

After reconstitution, the IL-2 Receptor antibody can be stored for up to one month at 4oC. For long-term, aliquot and store at -20oC. Avoid repeated freezing and thawing.