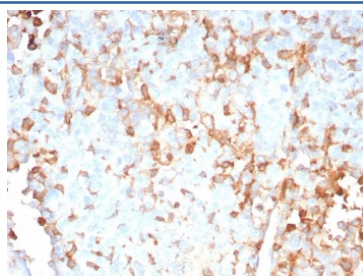


IL-2 Antibody / Interleukin-2 [clone IL2/9007] (V5371)

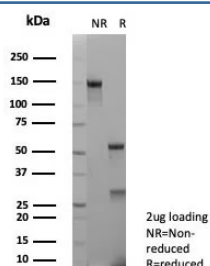
| Catalog No. | Formulation | Size |
|----------------|---|--------|
| V5371-100UG | 0.2 mg/ml in 1X PBS with 0.1 mg/ml BSA (US sourced), 0.05% sodium azide | 100 ug |
| V5371-20UG | 0.2 mg/ml in 1X PBS with 0.1 mg/ml BSA (US sourced), 0.05% sodium azide | 20 ug |
| V5371SAF-100UG | 1 mg/ml in 1X PBS; BSA free, sodium azide free | 100 ug |

[Bulk quote request](#)

| | |
|---------------------------|--|
| Availability | 1-3 business days |
| Species Reactivity | Human |
| Format | Purified |
| Host | Mouse |
| Clonality | Monoclonal (mouse origin) |
| Isotype | Mouse IgG2a, kappa |
| Clone Name | IL2/9007 |
| Purity | Protein A/G affinity |
| UniProt | P60568 |
| Localization | Secreted |
| Applications | Immunohistochemistry (FFPE) : 1-2ug/ml |
| Limitations | This IL-2 antibody is available for research use only. |



IHC staining of FFPE human adrenal gland tissue with IL-2 antibody (clone IL2/9007).
HIER: boil tissue sections in pH 9 10mM Tris with 1mM EDTA for 20 min and allow to cool before testing.



SDS-PAGE analysis of purified, BSA-free IL-2 antibody (clone IL2/9007) as confirmation of integrity and purity.

Description

Interleukin-2 (IL-2) is a T cell stimulatory cytokine that induces T cell proliferation and NK cell proliferation and activation. Produced by T-cells in response to antigenic or mitogenic stimulation, this protein is required for T-cell proliferation and other activities crucial to regulation of the immune response. Can stimulate B-cells, monocytes, lymphokine-activated killer cells, natural killer cells, and glioma cells. The receptor of this cytokine is a heterotrimeric protein complex whose gamma chain is also shared by interleukin 4 (IL4) and interleukin 7 (IL7). IL-2 induces CTLA-4 and also functions as a survival factor for lymphocytes.

Application Notes

Optimal dilution of the IL-2 antibody should be determined by the researcher.

Immunogen

A recombinant fragment (within amino acids 1-153) of human IL2 protein was used as the immunogen for the IL-2 antibody.

Storage

Aliquot the IL-2 antibody and store frozen at -20oC or colder. Avoid repeated freeze-thaw cycles.