

Il-16 Antibody (R32904)

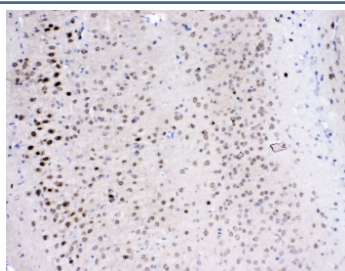
Catalog No.	Formulation	Size
R32904	0.5mg/ml if reconstituted with 0.2ml sterile DI water	100 ug

Bulk quote request

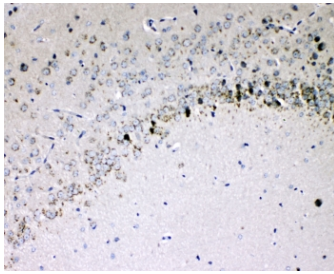
Availability	1-3 business days
Species Reactivity	Mouse
Format	Antigen affinity purified
Clonality	Polyclonal (rabbit origin)
Isotype	Rabbit IgG
Purity	Antigen affinity
Buffer	Lyophilized from 1X PBS with 2.5% BSA, 0.025% sodium azide
UniProt	O54824
Localization	Cytoplasmic, nuclear, secreted
Applications	Western Blot : 0.5-1ug/ml IHC (FFPE) : 1-2ug/ml ELISA (recombinant Mouse Protein) : 0.1-0.5ug/ml (BSA-free format available)
Limitations	This Il-16 antibody is available for research use only.



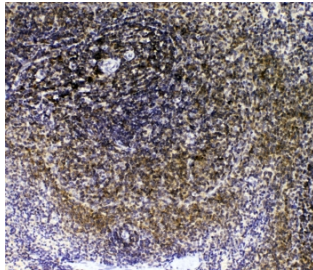
Western blot testing of recombinant mouse partial protein with Il-16 antibody at 0.5ug/ml.



IHC staining of FFPE mouse brain with Il-16 antibody at 1ug/ml. HIER: boil tissue sections in pH6, 10mM citrate buffer, for 10-20 min followed by cooling at RT for 20 min.



IHC staining of FFPE rat brain with IL-16 antibody at 1ug/ml. HIER: boil tissue sections in pH6, 10mM citrate buffer, for 10-20 min followed by cooling at RT for 20 min.



IHC staining of FFPE rat spleen with IL-16 antibody at 1ug/ml. HIER: boil tissue sections in pH6, 10mM citrate buffer, for 10-20 min followed by cooling at RT for 20 min.

Description

Interleukin 16 (IL-16) is a cytokine that released by a variety of cells (including lymphocytes and some epithelial cells) that has been characterized as a chemoattractant for certain immune cells expressing the cell surface molecule CD4. It is mapped to 15q25.1. IL-16 was originally described as a factor that could attract activated T cells in humans. It was previously called lymphocyte chemoattractant factor (LCF), and the augmentation of IL16 stimulation by CCR5 plays a role in regulation of Th1 cell recruitment and activation at sites of inflammation.

Application Notes

Optimal dilution of the IL-16 antibody should be determined by the researcher.

Immunogen

A recombinant mouse protein corresponding to amino acids S1205-S1322 was used as the immunogen for the IL-16 antibody.

Storage

After reconstitution, the IL-16 antibody can be stored for up to one month at 4oC. For long-term, aliquot and store at -20oC. Avoid repeated freezing and thawing.